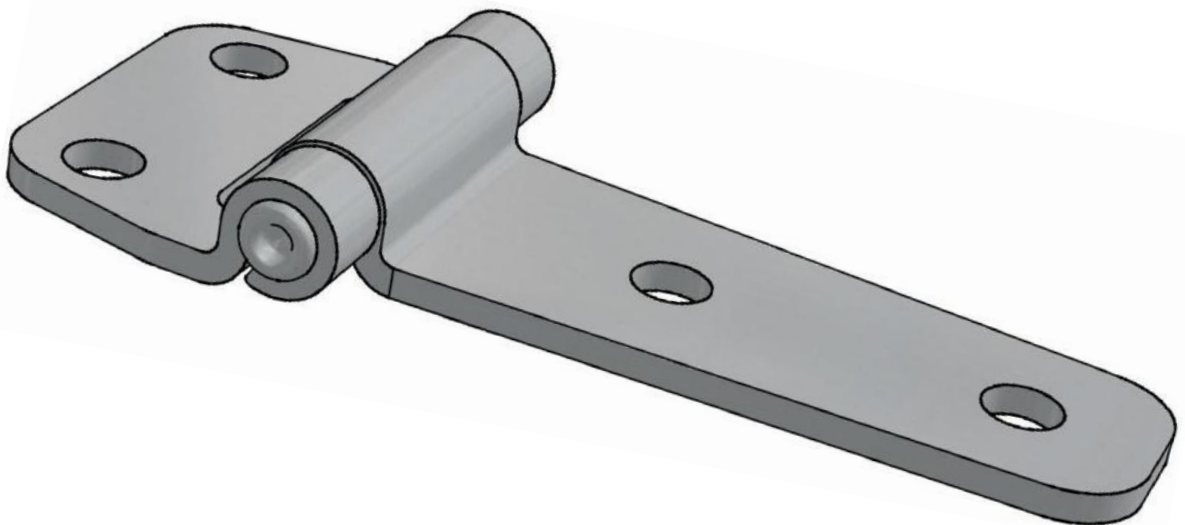


SCHARNIERE



Inhaltsverzeichnis

Artikel	Maße	Material		Seite
HNG.4050.AZ	40x50	Stahlblech verzinkt, Cr.6 frei		5
HNG.2650.AZ	26x50	Stahlblech verzinkt, Cr. 6 frei		5
HNG.6335.AZ	35x63	Stahlblech verzinkt, Cr. 6 frei		6
HNG.4520*	20x45	Zinkdruckguss, chrom glänzend		6
HNG.0334.AZ	18x49	Stahl Cr 6 frei verzinkt		7
HNG.206.3	45,5x16	Stahlblech, chrom glänzend		8
HNG.206.4	31,5x10,2	Zinkdruckguss, schwarz kunststoffbeschichtet		8
HNG.097MP.*	20x17x43	Stahlblech, verzinkt, Cr. 6 frei		9
HNG.212.*	30x42	Zinkdruckguss, schwarz kunststoffbeschichtet		9
HNG.205.1*	26,5x50	Zinkdruckguss, schwarz kunststoffbeschichtet		10
HNG.205.2*	20x40	Zinkdruckguss, schwarz kunststoffbeschichtet		10
HNG.212.3B*	20x42	Zinkdruckguss, schwarz kunststoffbeschichtet		11
HNG.213.2	26x50	Zinkdruckguss, Glanzverchromt		11
HNG.218.9118.BP	50x50	Edelstahl, poliert		12








Inhaltsverzeichnis

Artikel	Maße	Material		Seite
HNG.203.3*	50x64	Zinkdruckguss, verchromt		12
HNG.203.1*	32,5x64	Zinkdruckguss, verchromt		13
HNG.203.4	20,5x25,5	Zinkdruckguss, schwarz kunststoffbeschichtet		13
HNG.203.2	15,2x64	Zinkdruckguss, schwarz kunststoffbeschichtet		14
HNG.299	60x48	Zinkdruckguss, glanzverchromt		14
HNG.240.*	70x14 92x14	Aluminium, schwarz kunststoffbeschichtet		15
HNG.251	100 x 104	Zinkdruckguss, glanzverchromt		15
HNG.219.*	35x60 27,5x30 22x30	Zinkdruckguss, schwarz kunststoffbeschichtet oder glanzverchromt		16
HNG.295	64 x 64	Kunststoff schwarz		16
HNG.4040.*	40 x 40	Edelstahl Zinkdruckguss, glanzverchromt oder schwarz pulverbeschichtet		17
HNG.4040P	40 x 40	Zinkdruckguss, schwarz kunststoff- beschichtet		17
HNG.5050.*	50 x 50	Edelstahl Zinkdruckguss, glanzverchromt oder schwarz pulverbeschichtet		18
HNG.5050P.*	50 x 50	Zinkdruckguss, schwarz pulver- beschichtet oder glanzverchromt		18
HNG.6060.*	60 x 60	Zinkdruckguss, schwarz pulver- beschichtet oder glanzverchromt		19

Inhaltsverzeichnis

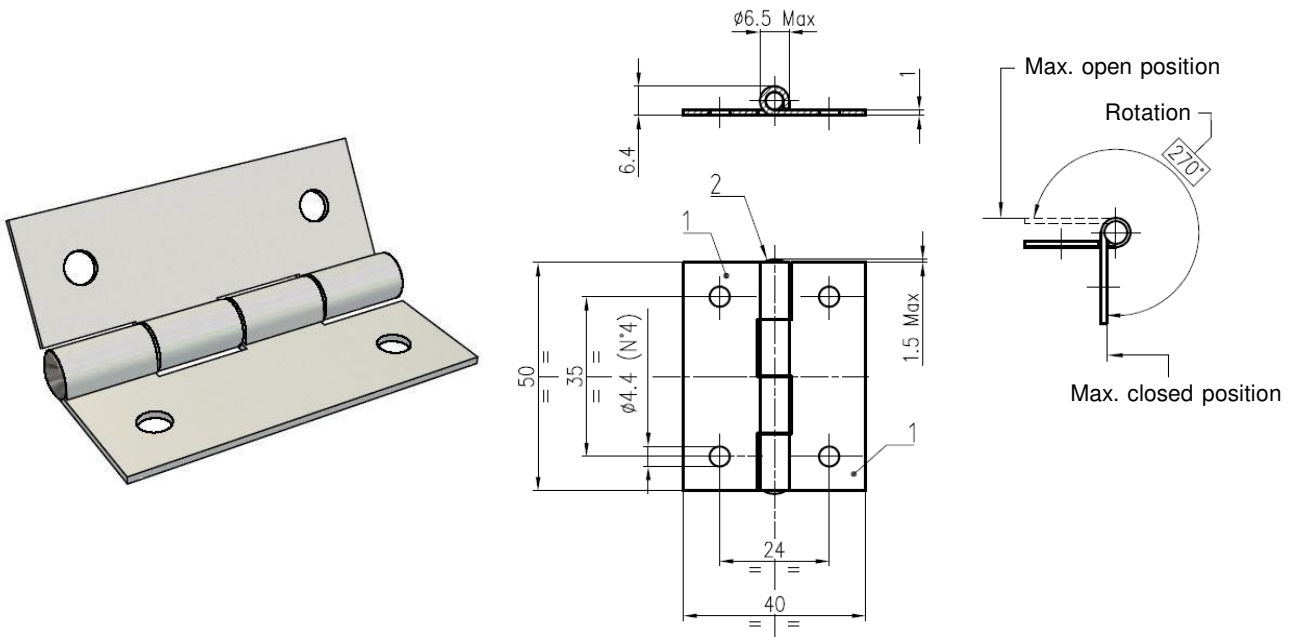
Artikel	Maße	Beschreibung		Seite
HNG.6464.*	64 x 64	Zinkdruckguss, schwarz pulver- beschichtet oder glanzverchromt		19
HNG.214.*	76 x 50	Zinkdruckguss, schwarz kunststoffbeschichtet		20
HNG.272	43 x 36	Kunststoff schwarz		20
HNG.42100.*	100 x 62	Stahlblech Cr 6 freiverzinkt oder schwarz pulverbeschichtet		21
HNG30105.*	105 x 59	Stahlblech Cr 6 freiverzinkt Edelstahlblech		22
HNG.21480.*	122 x 80	Stahlblech Cr 6 freiverzinkt Edelstahlblech		23
HNG.7050S.AZ	70 x 50	Stahlblech Cr 6 freiverzinkt		24
HNG.50105.AZ	50 x 105	Stahlblech Cr 6 freiverzinkt		25
HNG.7083.*	70 x 83	Edelstahl poliert oder schwarz emailliert		26
HNG.6059.*	60 x 59	Stahlblech Cr 6 freiverzinkt Edelstahlblech		27
HNG.250.*	60x20	Stahl Cr 6 freiverzinkt		27
HNG.275.1	70 x 22	Stahl Cr 6 freiverzinkt		28
HNG.275.2	67x22	Stahl Cr 6 freiverzinkt		28
HNG.7002.AZ	66x22	Stahl Cr 6 freiverzinkt		29

Inhaltsverzeichnis

Artikel	Maße	Material		Seite
HNG.268.*	126 x 17,5/20,5/2 3,9	Stahlblech Cr 6 freiverzinkt Edelstahlblech		29
HNG.208	30 x 20	Zinkdruckguss glanzverchromt		30
HNG.225.3*	85 x 17,5 Ø5	Stahl Cr6 frei verzinkt		30
HNG.11DX.AZ	12 x 35 Ø6,2	Stahl Cr6 frei verzinkt		31
HNG.11SX.AZ	12 x 35 Ø6,2	Stahl Cr6 frei verzinkt		31
HNG.263	50 x 60 Ø9,5	Stahl Cr6 frei verzinkt		31
HNG.248	60x18	Stahl Cr6 frei verzinkt		32

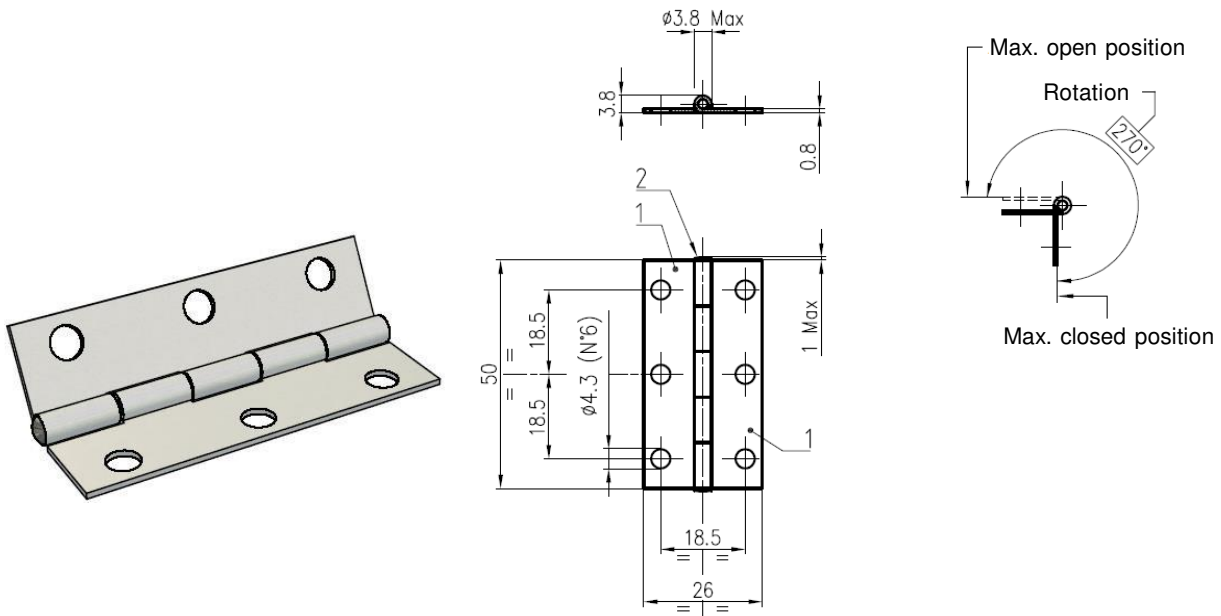


HIG.4050..Z - Scharnier



Ref	Part description	Material - Finishing
1	Flange, thickness 1,0 mm (2)	Fe360 - White zinc Cr6 free
2	Riveted pin	Steel - White zinc Cr6 free

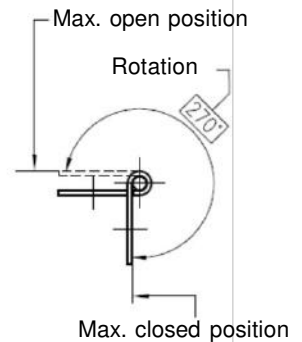
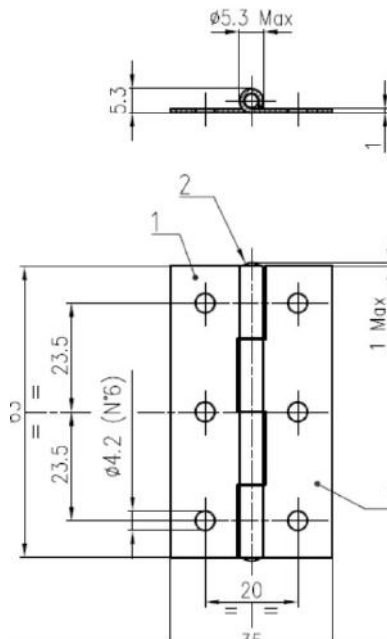
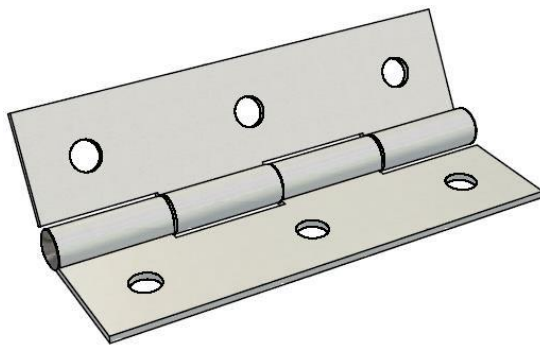
HIG.2650..Z - Scharnier



Ref	Part description	Material - Finishing
1	Flange, thickness 0,8 mm (2)	Fe360 - White zinc Cr6 free
2	Riveted pin	Steel - White zinc Cr6 free

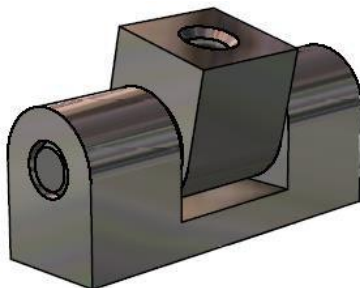


HIG.6335.1Z - Scharnier

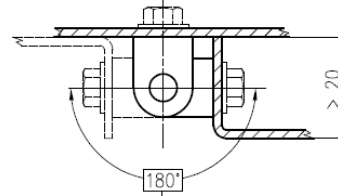


Ref	Part description	Material - Finishing
1	Flange, thickness 1,0 mm (2)	Fe360 - White zinc Cr6 free
2	Riveted pin	Steel - White zinc Cr6 free

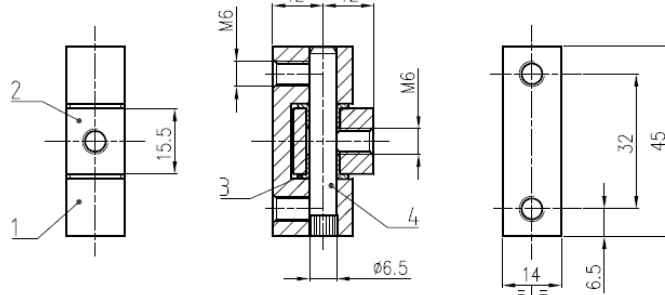
HIG.4520.* - Scharnier



Installation example



Rotation

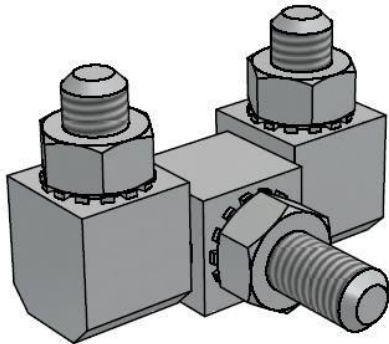


Insert * material "code" into hinge part number

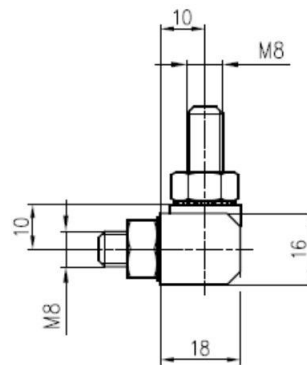
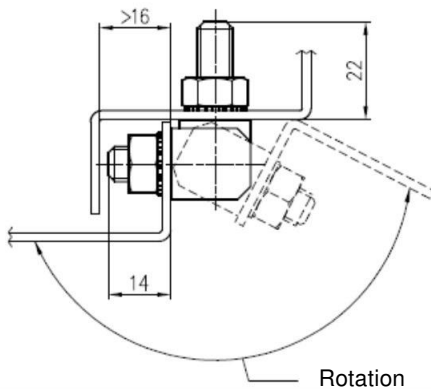
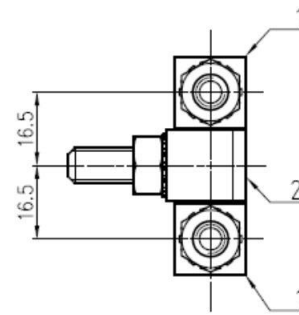
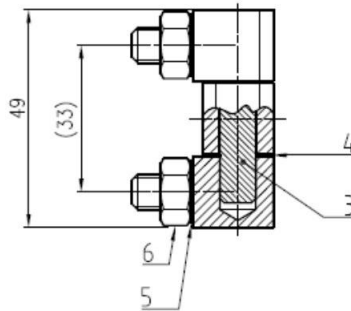
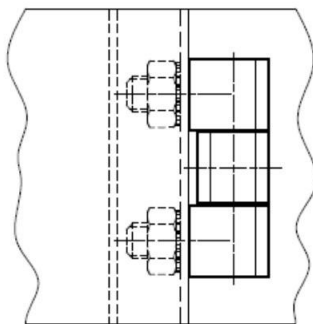
Ref	Part description	Material - Finishing (AC)	Material - Finishing (BK)
1	Base	Zinc alloy - Bright chrome	Zinc alloy - Epoxy black
2	Rotating flange	Zinc alloy - Bright chrome	Zinc alloy - Epoxy black
3	Grommet (2)	Poliammide	Poliammide
4	Rotation pin	AISI 303	AISI 303



HIG.0334.1Z - Scharnier



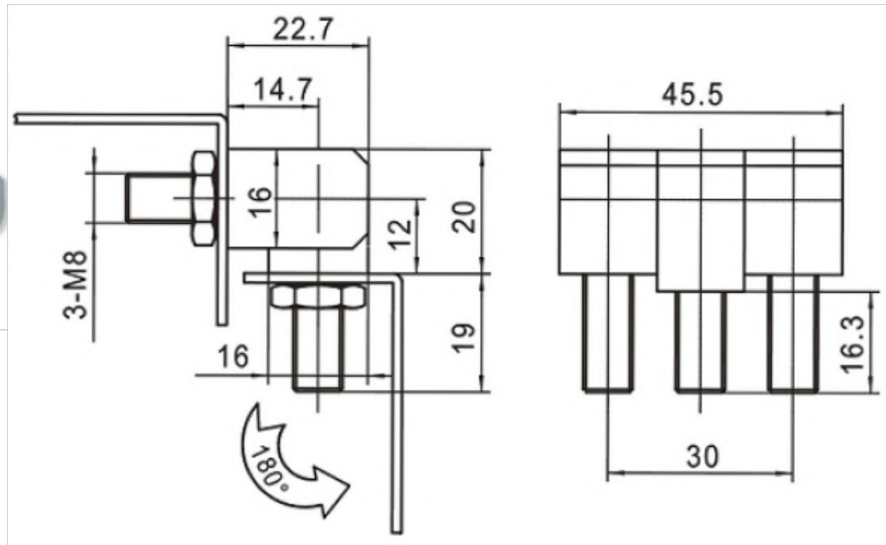
Installation example



Ref	Part description	Material - Finishing
1	Flange with stud M8X14	Steel - White zinc Cr6 free
2	Flange with stud M8X20	Steel - White zinc Cr6 free
3	Rotation pin	Stainless steel
4	Spacer	Stainless steel
5	Washer M8	Steel - White zinc Cr6 free
6	Exagonal nut M8	Steel - White zinc Cr6 free

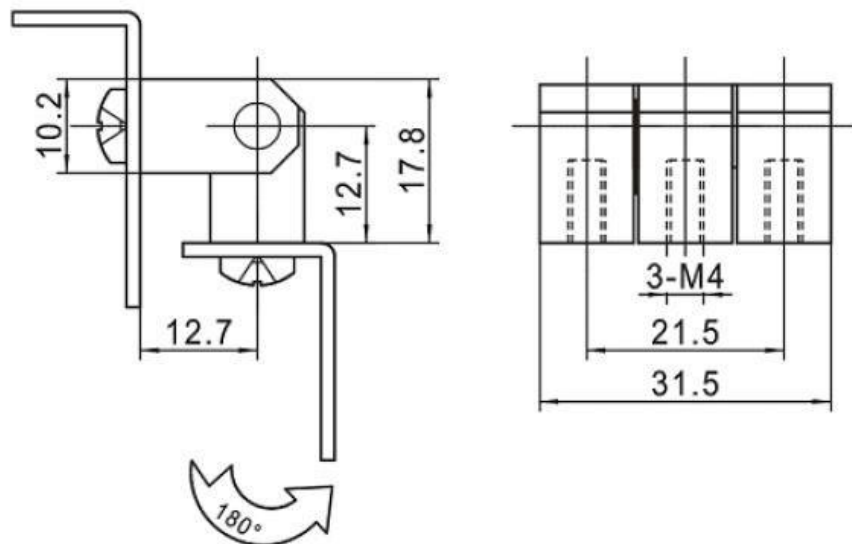


HIG.206.3 - Scharnier



Ref	Part description	Material - Finishing
1	Hinge	Steel - Bright chrome
2	Stud	Steel - White zinc Cr6 free

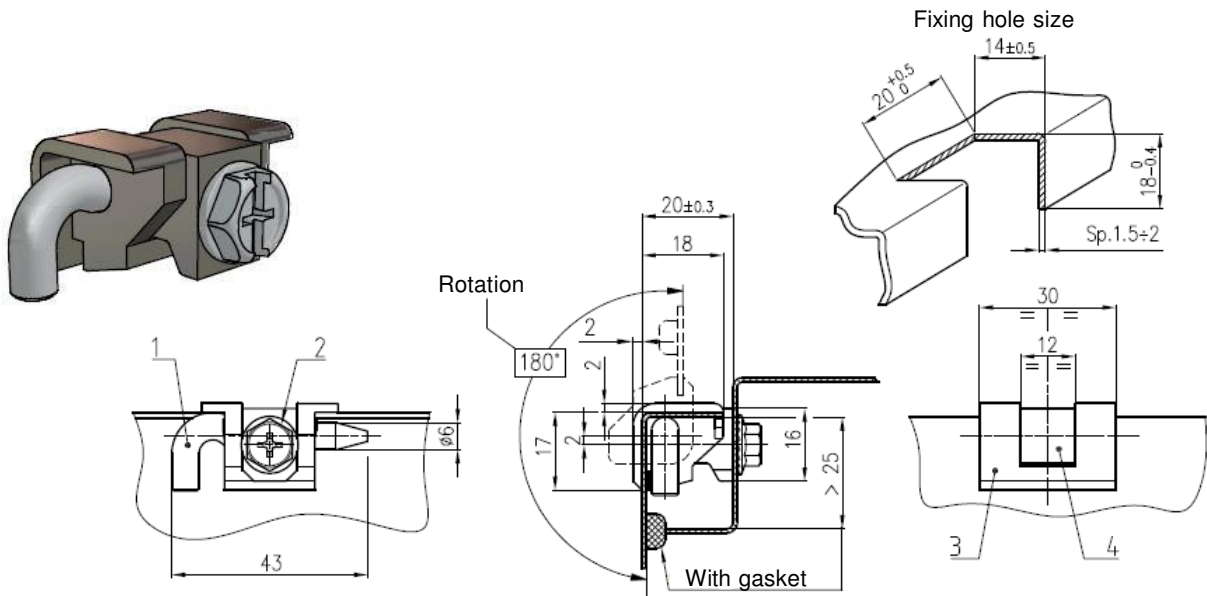
HIG.206.4 - Scharnier



Ref	Part description	Material - Finishing
1	Hinge	Zinc alloy - Epoxy black
2	Stud	Steel - White zinc Cr6 free



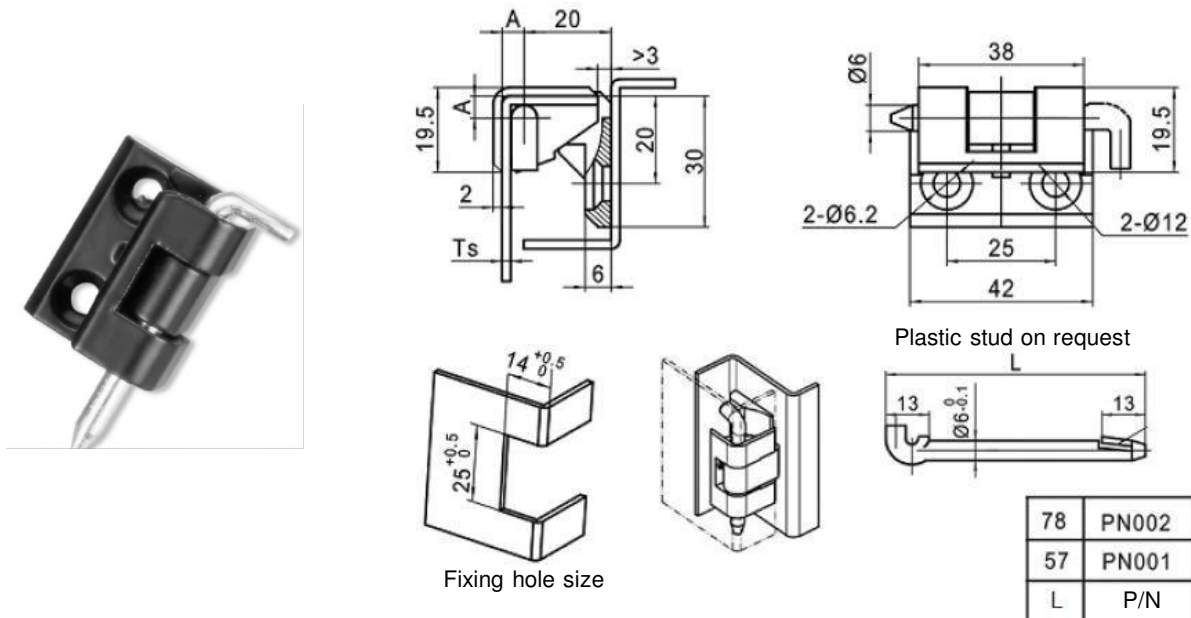
HIG.097MP.** - Scharnier



Insert * material "code" into hinge part number

Ref	Part description	Material - Finishing (AC)	Material - Finishing (BK)
1	Fixing stud	Steel 4.8 - White zinc Cr6 free	Steel 4.8 - White zinc Cr6 free
2	Screw	Steel 4.8 - White zinc Cr6 free	Steel 4.8 - White zinc Cr6 free
3	Base	Zinc alloy - Bright chrome	Zinc alloy - Epoxy black
4	Bracket	Zinc alloy - Bright chrome	Zinc alloy - Epoxy black

HIG.212.* - Scharnier

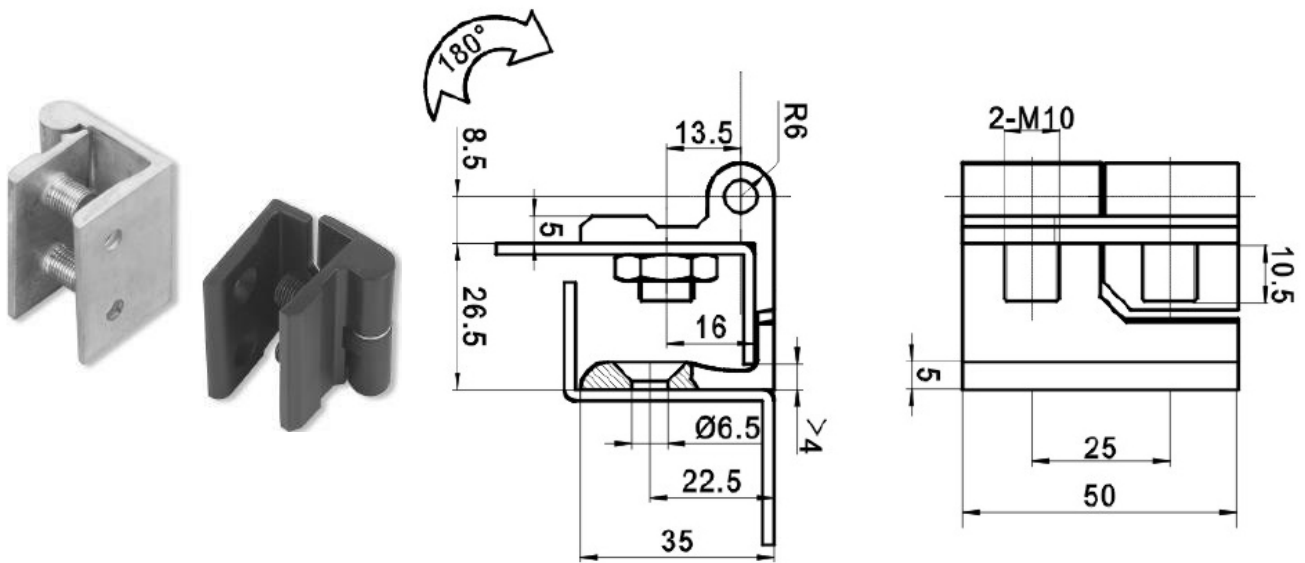


Hinge part number	Ts	A
HNG.212.1	2	5,1
HNG.212.2	3	6,1
HNG.212.3	1,5	4,6

Ref	Part description	Material - Finishing
1	Hinge	Zinc alloy - Epoxy black
2	Stud	Steel - Nickel plated

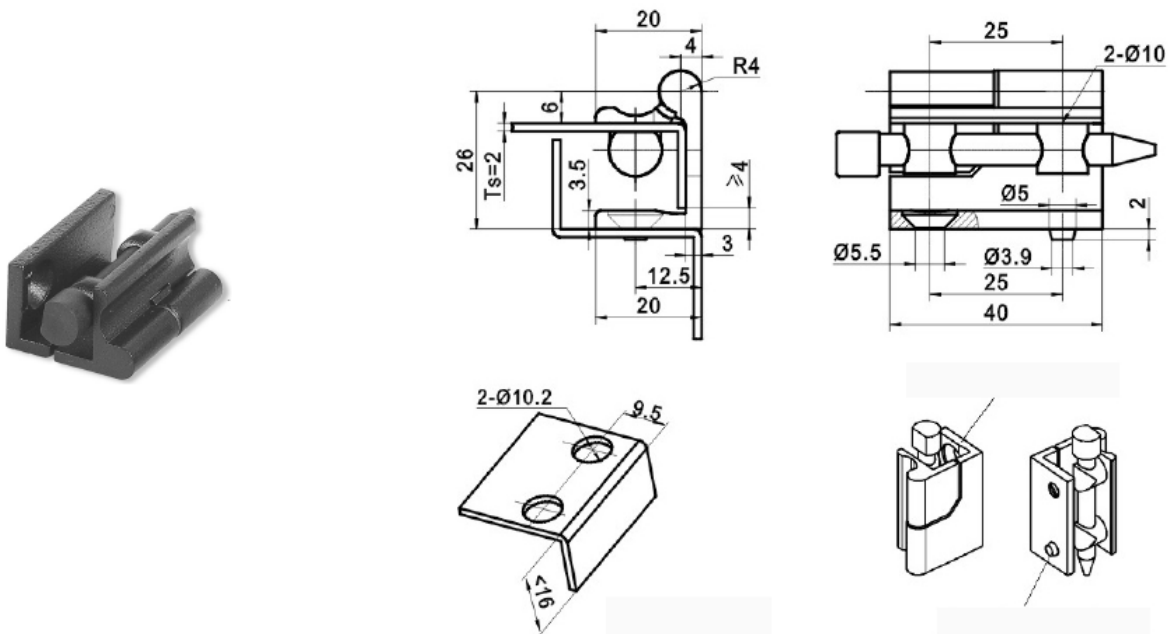


HIG.205.1* - Scharnier



Hinge part number	Type	Material - Finishing
HNG.205.1Z	Left	Zinc alloy - Epoxy black
HNG.205.1Y	Right	Zinc alloy - Epoxy black

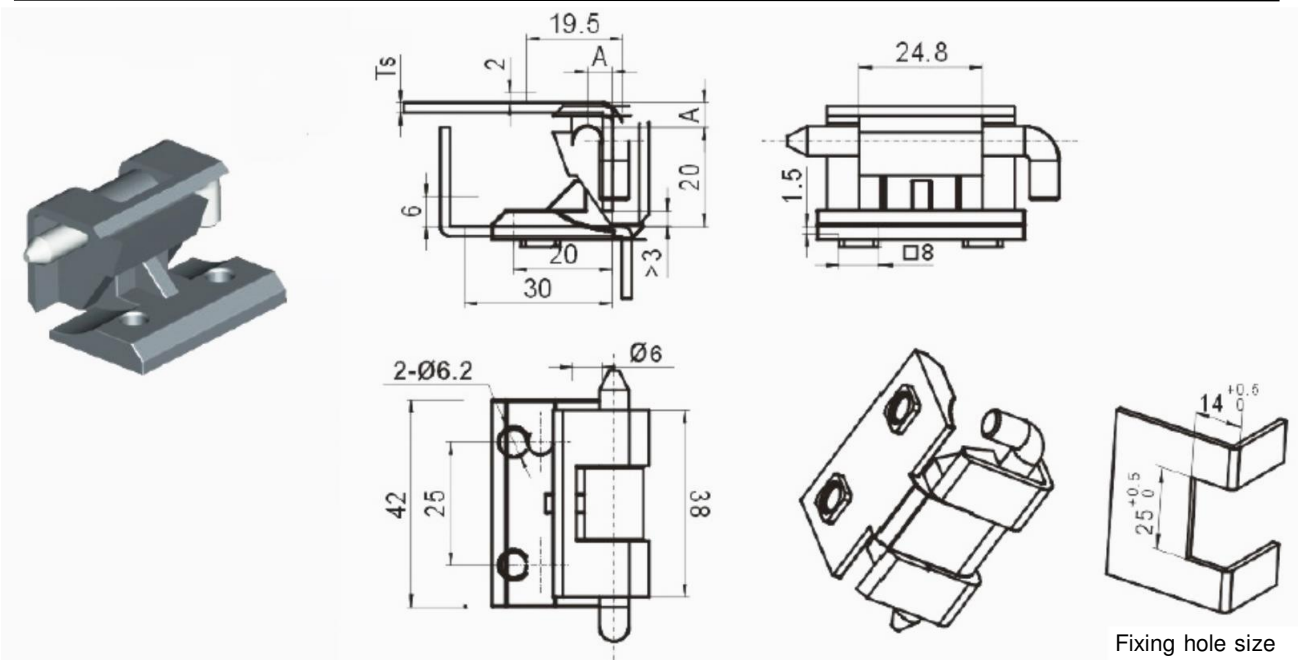
HIG.205.2* - Scharnier



Hinge part number	Type	Material - Finishing
HNG.205.2Z	Left	Zinc alloy - Epoxy black
HNG.205.2Y	Right	Zinc alloy - Epoxy black



HIG.212.3B.* -

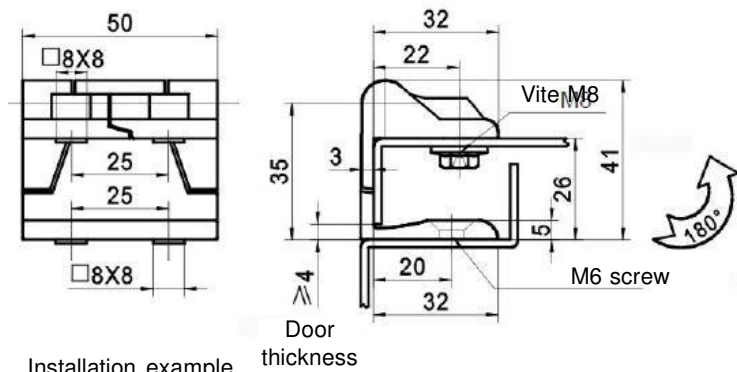


Fixing hole size door

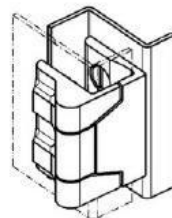
Hinge part number	Ts	A
HNG.212.3B.1	1,5	4,6
HNG.212.3B.2	3	6,1
HNG.212.3B.3	2	5,1

Ref	Part description	Material - Finishing
1	Hinge	Zinc alloy - Epoxy black
2	Stud	Steel - Nickel plated

HIG.213.2 - Scharnier



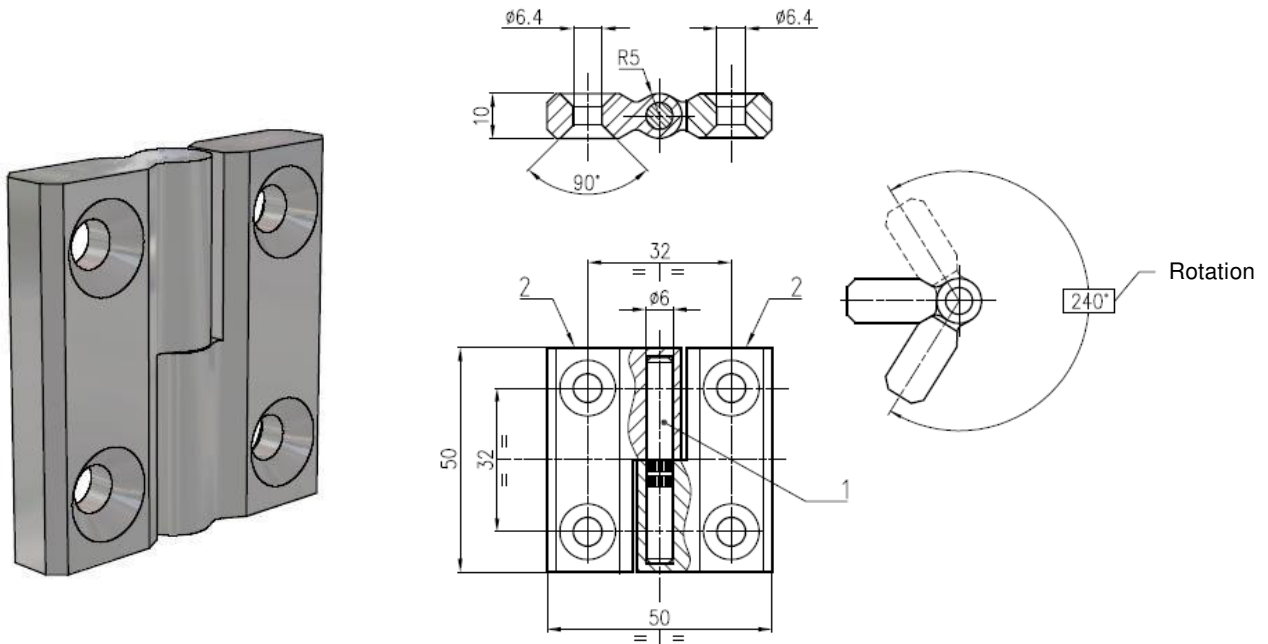
Installation example



Ref	Part description	Material - Finishing
1	Hinge	Zinc alloy - Bright chrome
2	Stud	Steel - White zinc Cr6 free

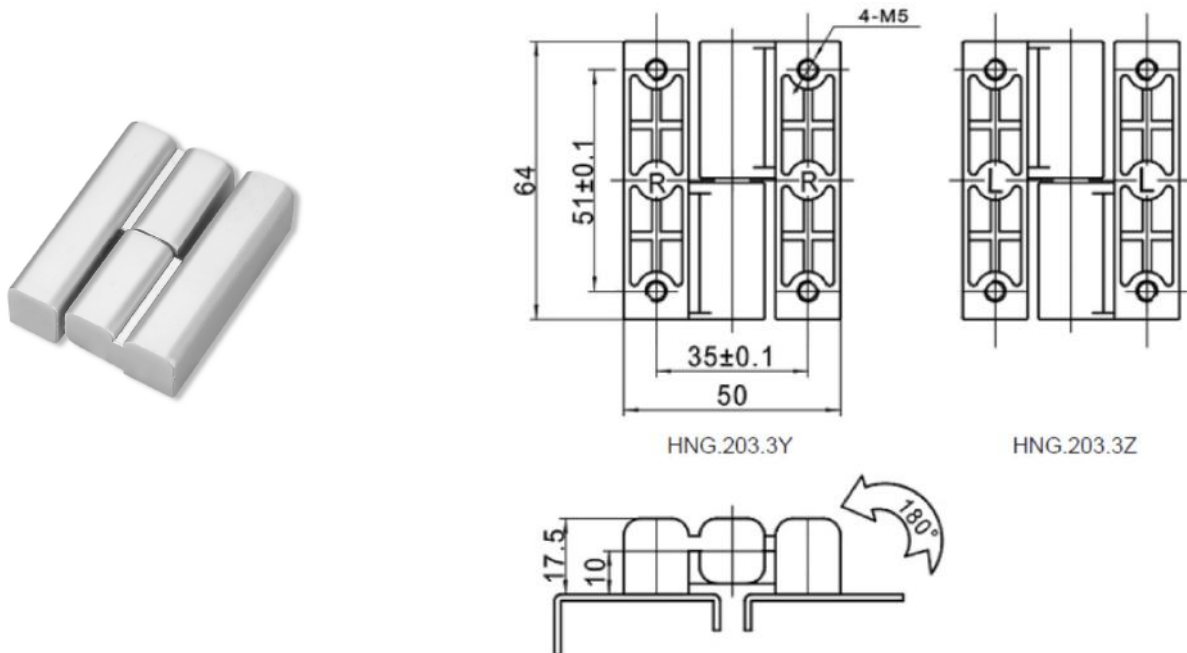


HIG.218.9119.IP - Scharnier



Ref	Part description	Material - Finishing
1	Rotation pin	AISI303
2	Flange (2)	AISI304 - Polished

HIG.203.3* - Scharnier

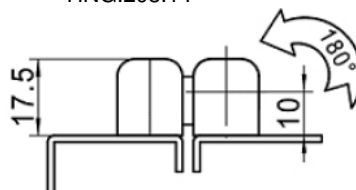
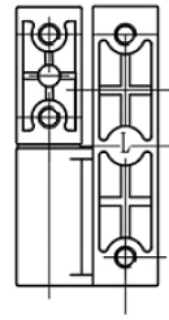
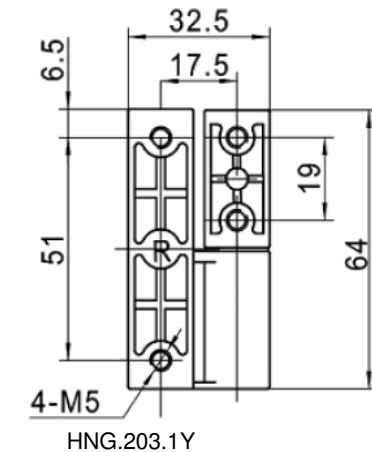


Hinge part number	Rotation
HNG.203.3Z	Left
HNG.203.3Y	Right

Ref	Part description	Material - Finishing
1	Hinge	Zinc alloy - Grey chrome
2	Stud	Steel - White zinc Cr6 free
3	Washer	Nylon



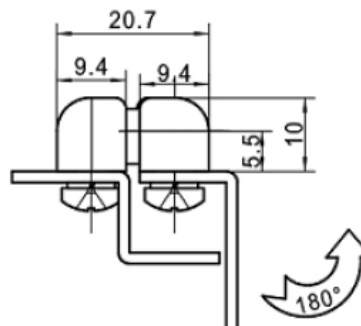
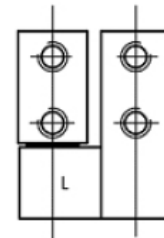
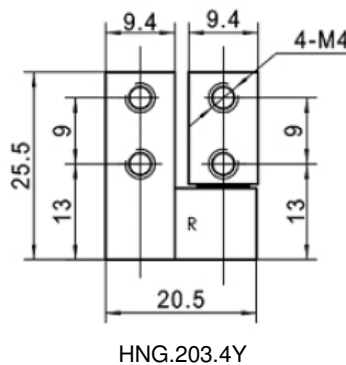
HIG.203.1* - Scharnier



Hinge part number	Rotation
HNG.203.1Z	Left
HNG.203.1Y	Right

Ref	Part description	Material - Finishing
1	Hinge	Zinc alloy - Grey chrome
2	Stud	Steel - White zinc Cr6 free
3	Washer	Nylon

HIG.203.4* - Scharnier

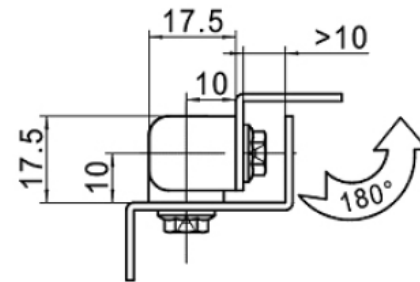
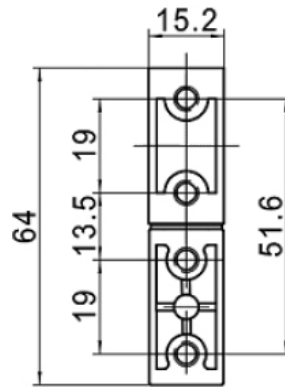


Hinge part number	Rotation
HNG.203.4Z	Left
HNG.203.4Y	Right

Ref	Part description	Material - Finishing
1	Hinge	Zinc alloy - Epoxy black
2	Stud	Steel - White zinc Cr6 free
3	Washer	Nylon

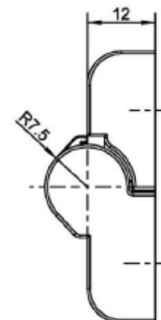
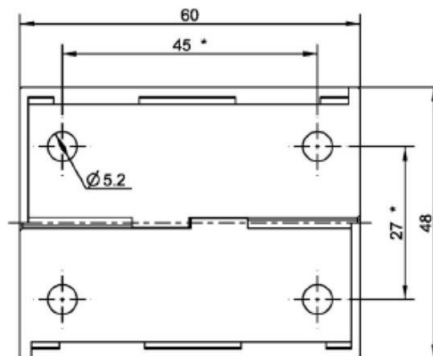
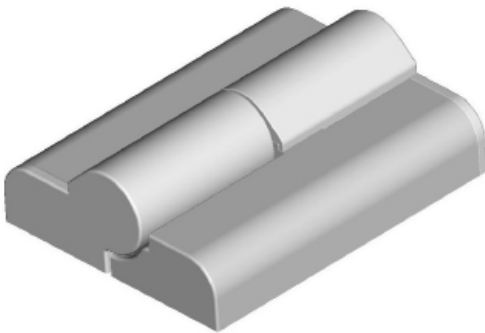


HIG.203.2- Scharnier



Ref	Part description	Material - Finishing
1	Hinge	Zinc alloy - Epoxy black

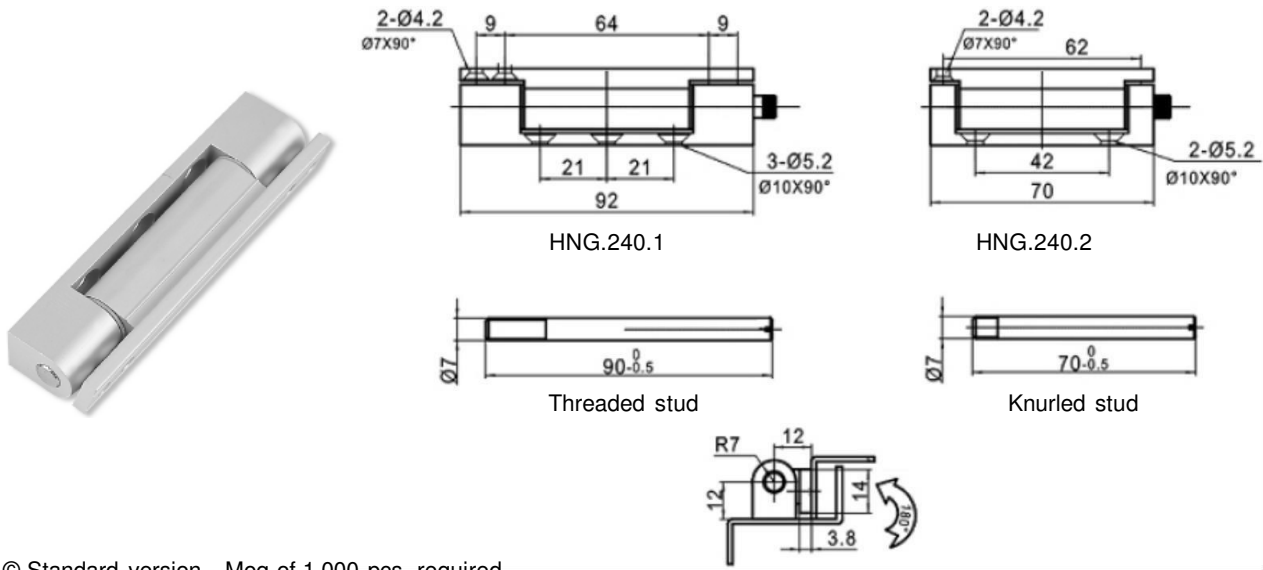
HIG.299 - Scharnier



Ref	Part description	Material - Finishing
1	Hinge	Zinc alloy - Bright chrome



HIG.240.* - Scharnier

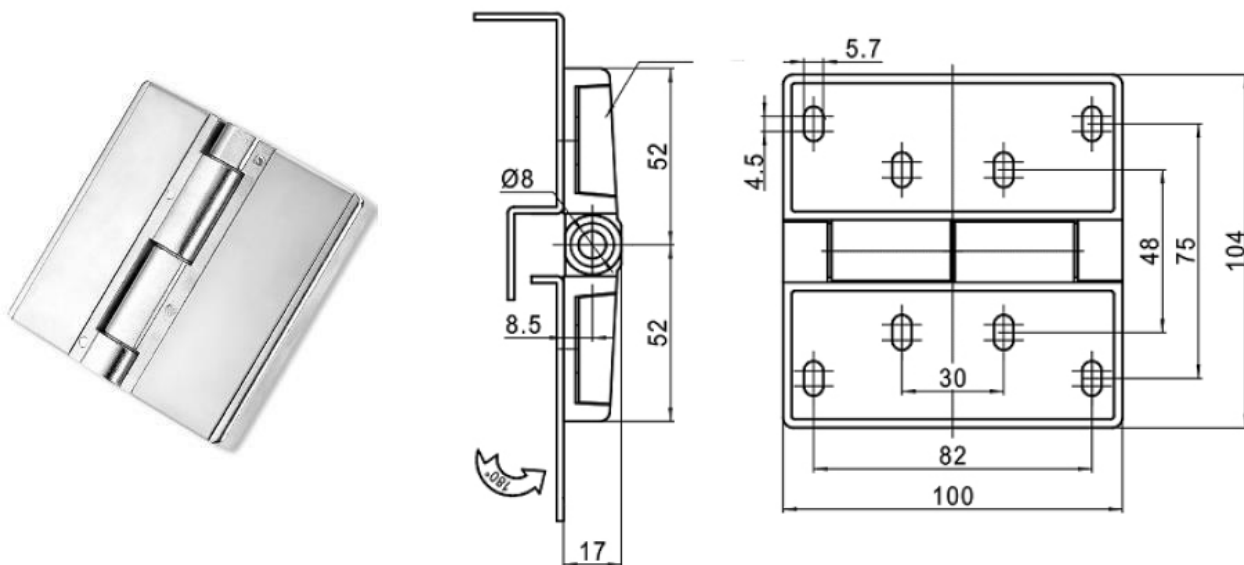


© Standard version - Moq of 1.000 pcs. required for non standard version

Hinge part number	Stud type
HNG.240.1 ©	Knurled
HNG.240.1D	Threaded
HNG.240.2 ©	Knurled
HNG.240.2D	Threaded

Ref	Part description	Material - Finishing
1	Hinge	Alluminum - Epoxy black
2	Stud	Steel - Nickel plated

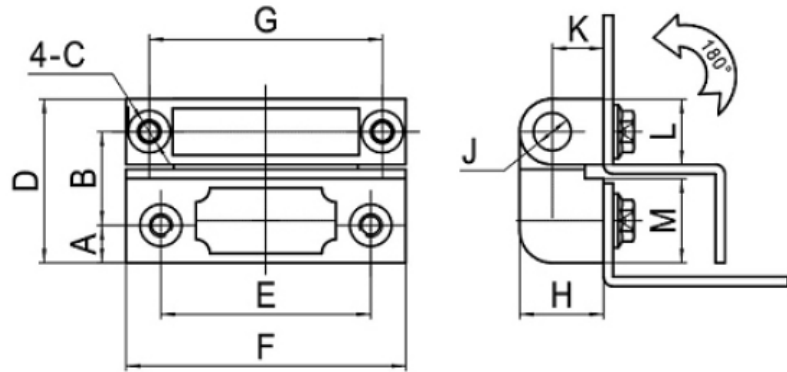
HIG.251 - Scharnier



Ref	Part description	Material - Finishing
1	Hinge	Zinc alloy - Bright chrome
2	Stud	Stainless steel
3	Cover	Stainless steel

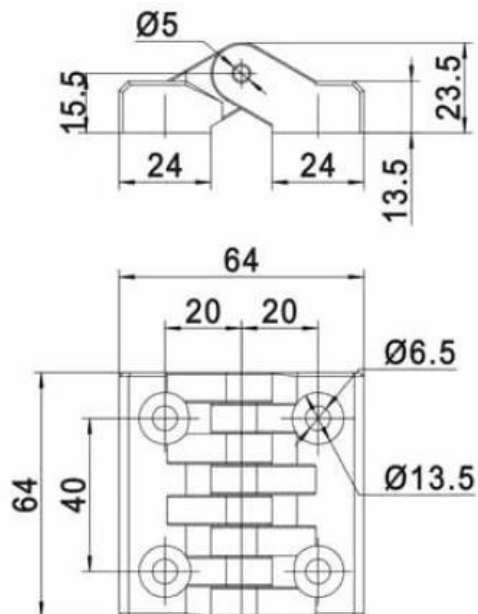


HIG.219.* - Scharnier



Hinge part number	A	B	c	D	E	F	G	H	J	K	L	M	Material - Finishing
HNG.219.1	8	20	M5	35	45	60	50	18	0 8	11	14	18	Zinc alloy - Epoxy black
HNG.219.1R	8	20	M5	35	45	60	50	18	0 8	11	14	18	Zinc alloy - Epoxy black
HNG.219.2	4	13	M4	22	22	30	22	13	0 5	8	10	9	Zinc alloy - Epoxy black
HNG.219.2R	4	13	M4	22	22	30	22	13	0 5	8	10	9	Zinc alloy - Epoxy black
HNG.219.3	4	18,5	M4	27,5	22	30	22	13	0 5	8	10	14,5	Zinc alloy - Epoxy black
HNG.219.3R	4	18,5	M4	27,5	22	30	22	13	0 5	8	10	14,5	Zinc alloy - Epoxy black

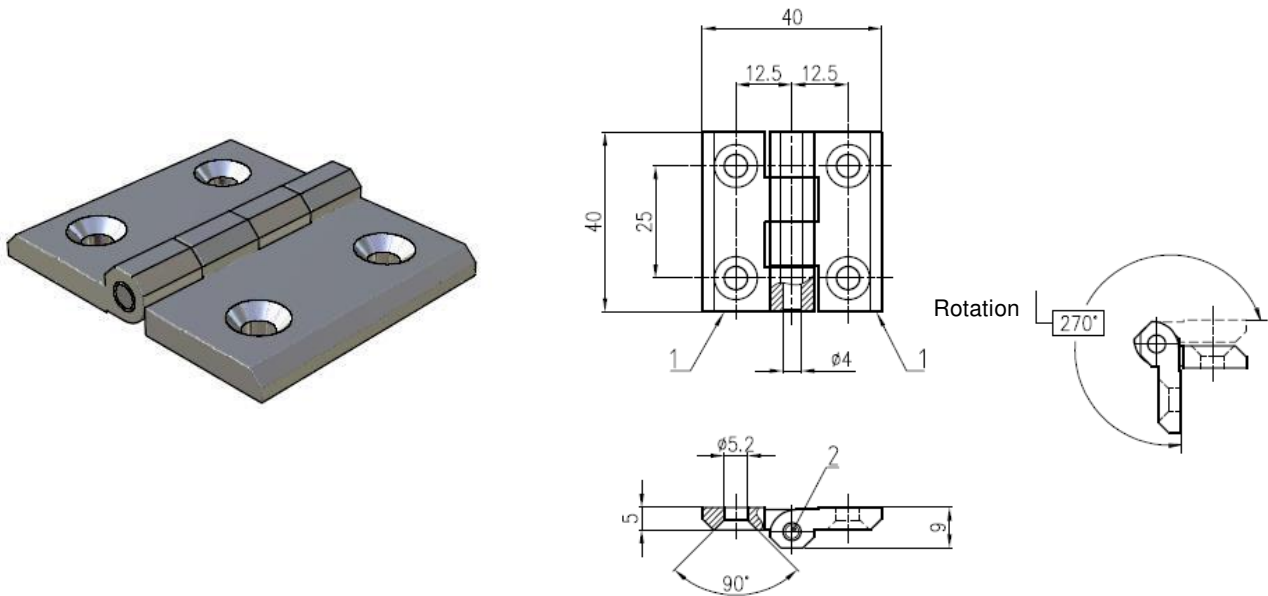
HIG.295- Scharnier



Ref	Part description	Material - Finishing
1	Hinge	Black plastic
2	Stud	Steel - White zinc cr6 free



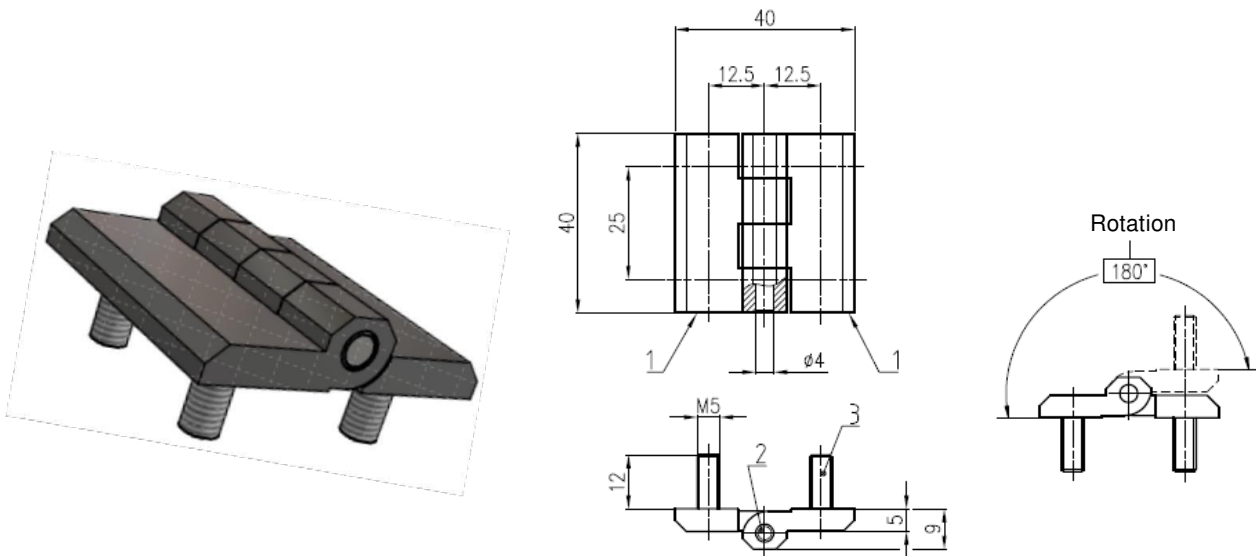
HIG.4040.* - Scharnier



Insert * material "code" into hinge part number

Ref	Part description	Material - Finishing (AC)	Material - Finishing (BK)	Material - Finishing (BP)
1	Flange (2)	Zinc alloy - Bright chrome	Zinc alloy - Black powder coated	AISI304
2	Rotation pin	AISI303	AISI303	AISI303

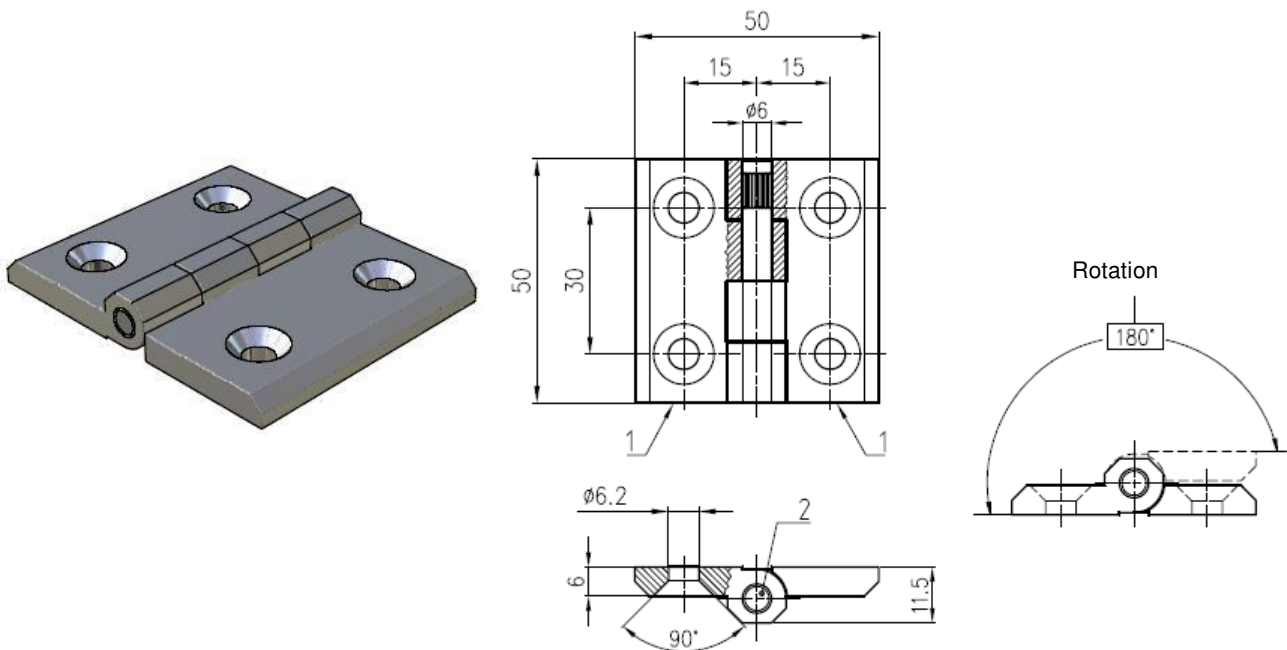
HIG.4040P.IK - Scharnier



Ref	Part description	Material - Finishing
1	Flange with M6 stud (2)	Zinc alloy - Black powder coated
2	Rotation pin	AISI303
3	M6 threaded stud	AISI304



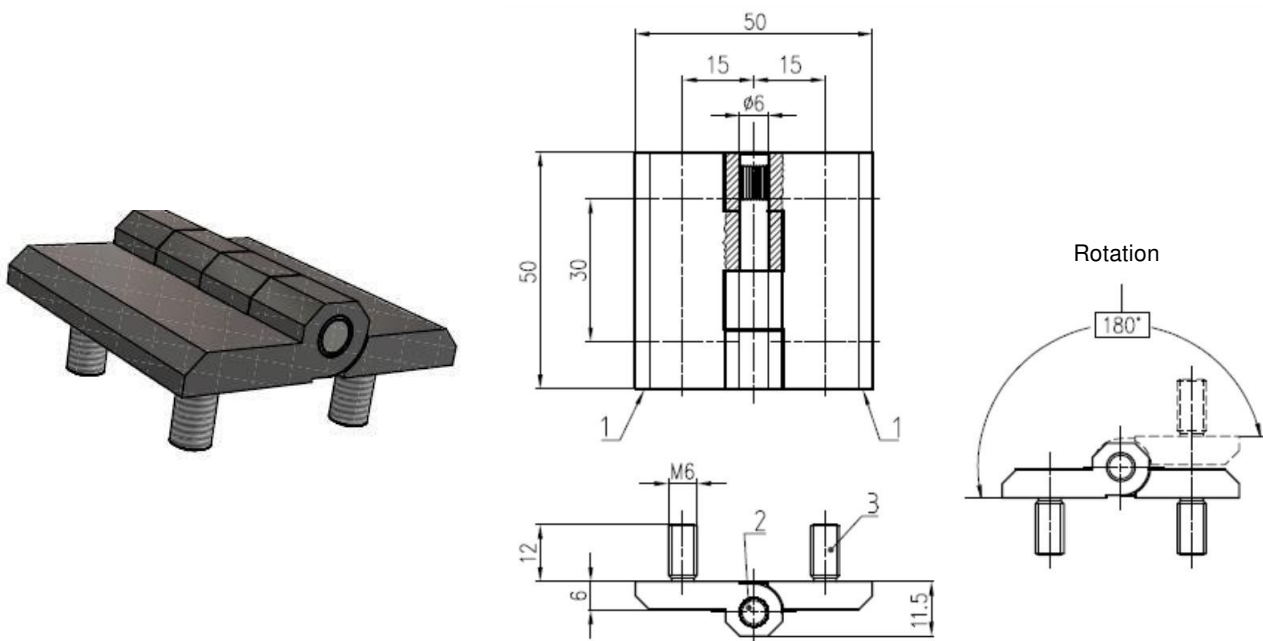
HIG.5050.* - Scharnier



Insert * material "code" into hinge part number

Ref	Part description	Material - Finishing (AC)	Material - Finishing (BK)	Material - Finishing (BP)
1	Flange (2)	Zinc alloy - Bright chrome	Zinc alloy - Black powder coated	AISI304
2	Rotation pin	AISI303	AISI303	AISI303

HIG.5050P.* - Scharnier

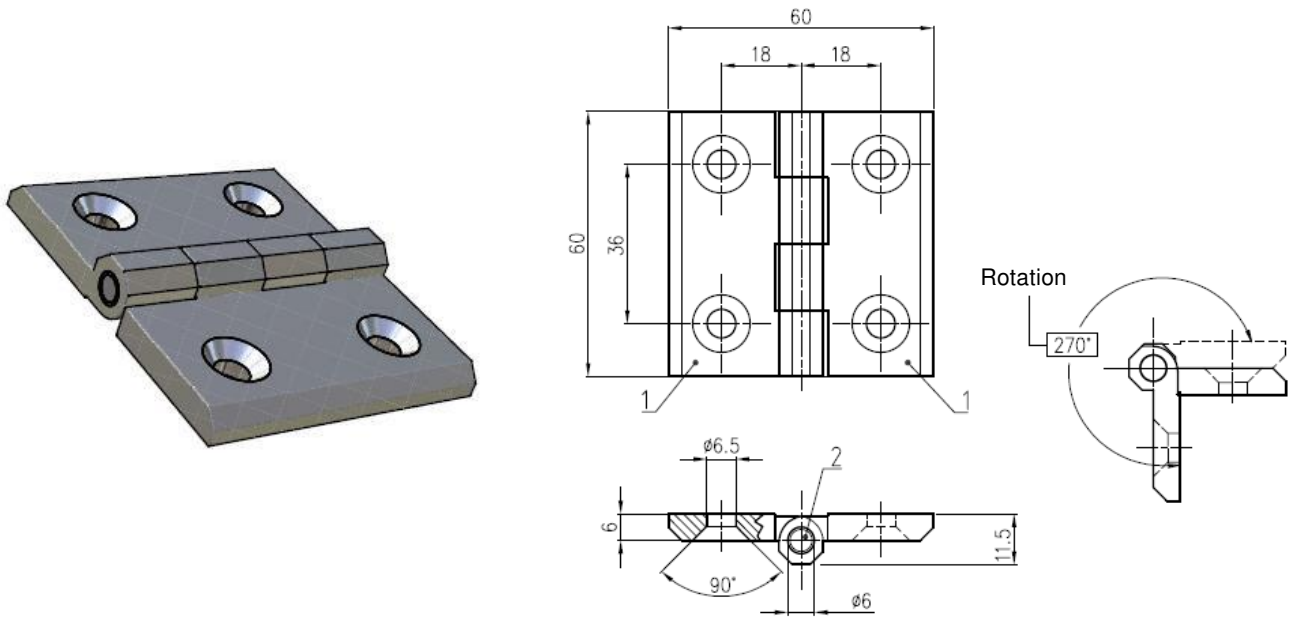


Insert * material "code" into hinge part number

Ref	Part description	Material - Finishing (AC)	Material - Finishing (BK)
1	Flange with M6 stud (2)	Zinc alloy - Bright chrome	Zinc alloy - Black powder coated
2	Rotation pin	AISI303	AISI303
3	M6 threaded stud	AISI304	AISI304



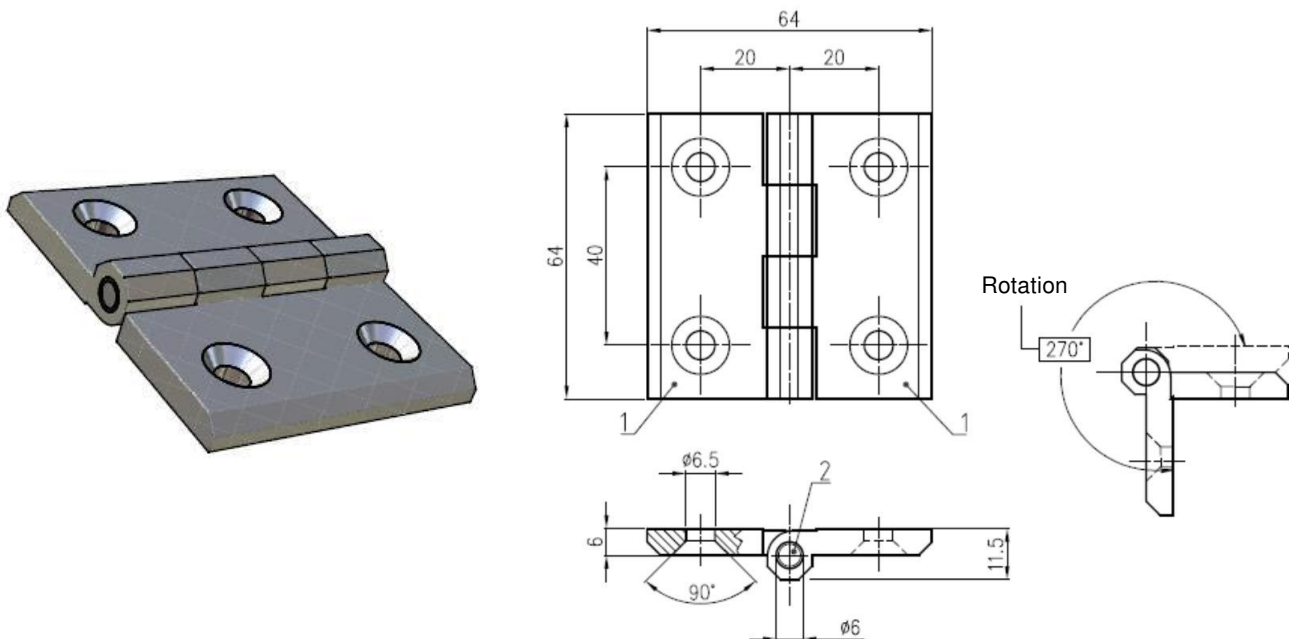
HIG.6060.* - Scharnier



Insert * material "code" into hinge part number

Ref	Part description	Material - Finishing (AC)	Material - Finishing (BK)
1	Flange (2)	Zinc alloy - Bright chrome	Zinc alloy - Black powder coated
2	Rotation pin	AISI303	AISI303

HIG.6464.* - Scharnier

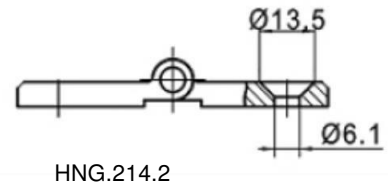
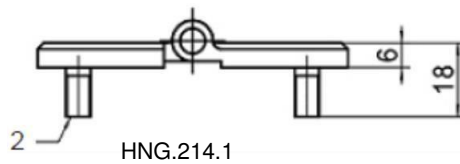
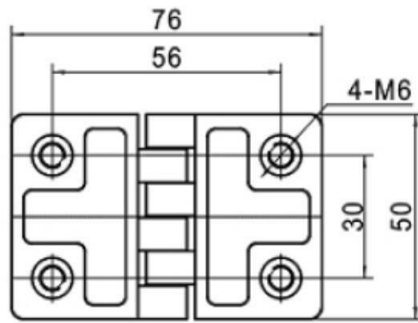


Insert * material "code" into hinge part number

Ref	Part description	Material - Finishing (AC)	Material - Finishing (BK)
1	Flange (2)	Zinc alloy - Bright chrome	Zinc alloy - Black powder coated
2	Rotation pin	AISI303	AISI303

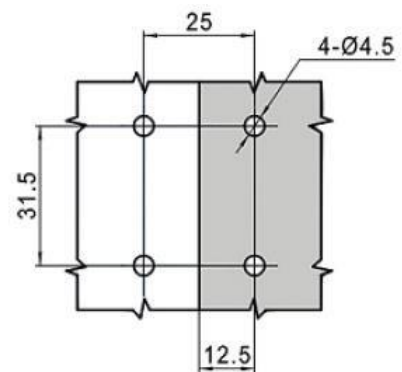
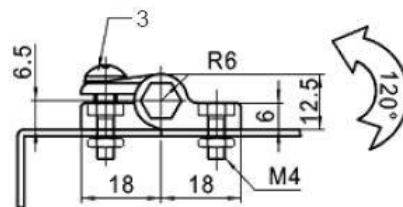


HIG.214.* - Scharnier

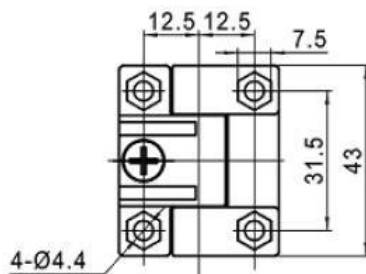


Hinge part number	Type	Ref	Part description	Material - Finishing
HNG.214.1	Threaded studs	1	Hinge	Zinc alloy - Epoxy black
HNG.214.2	Holes	2	Stud	Steel - Epoxy black

HIG.212 - Scharnier



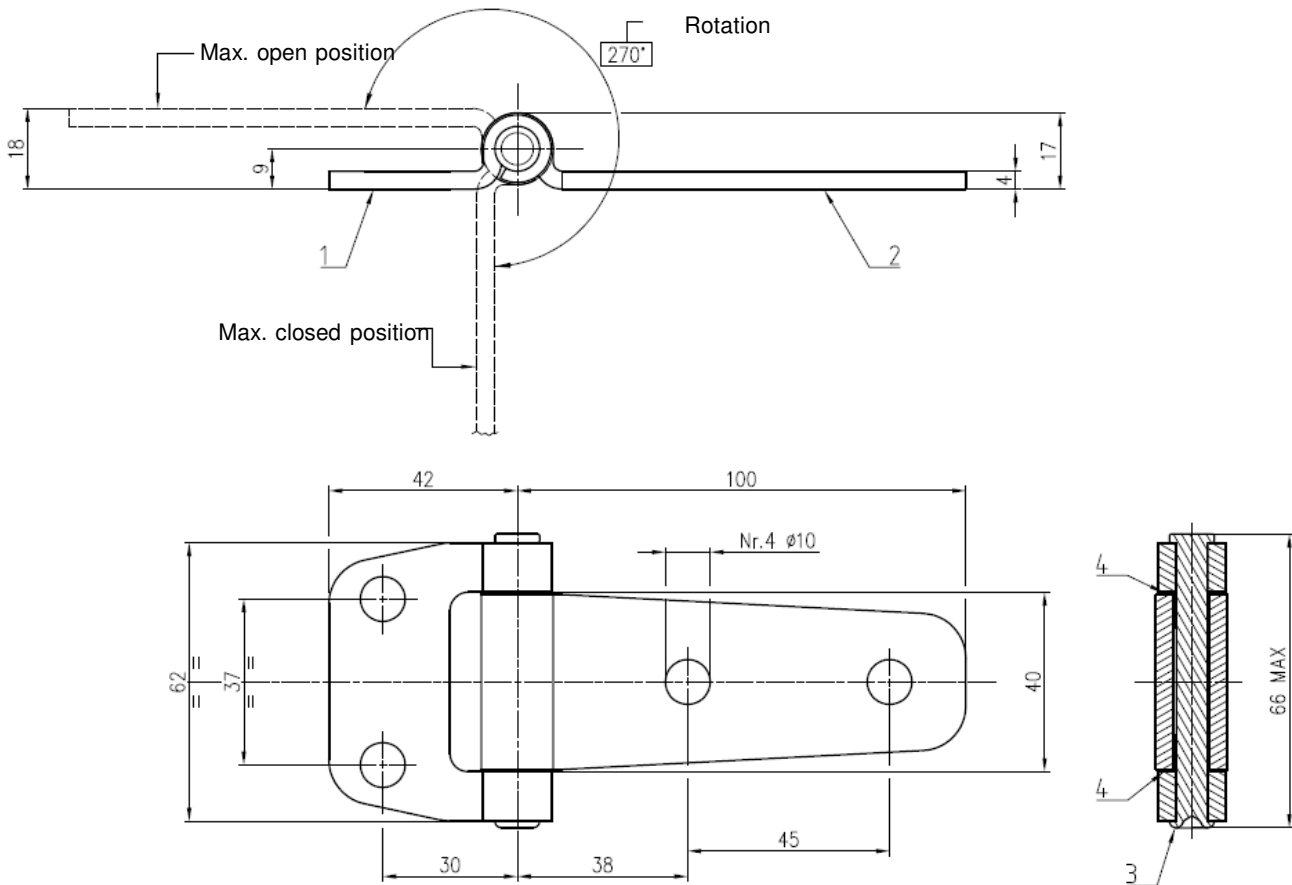
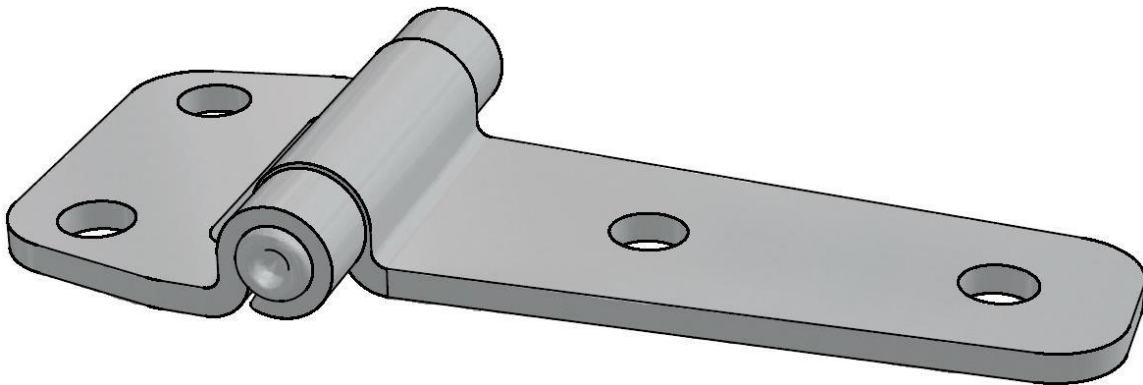
Fixing hole size



Ref	Part description	Material - Finishing
1	Hinge	Black plastic
2	Stud	Black plastic
3	Screws and nuts	Steel - White zinc Cr6 free



HIG.42100.* - Friktionsscharnier

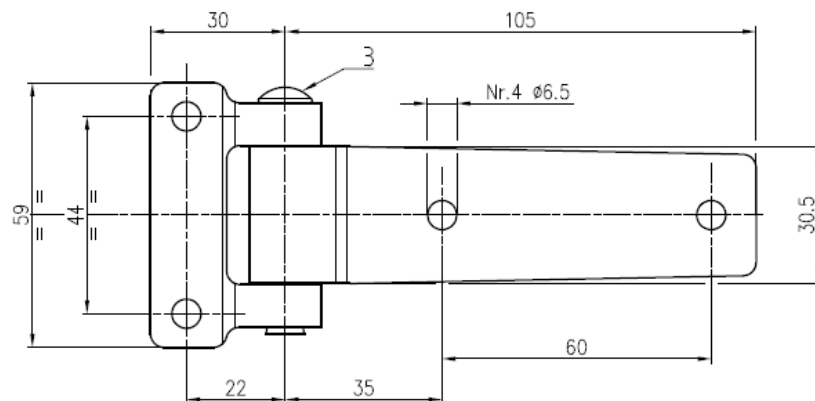
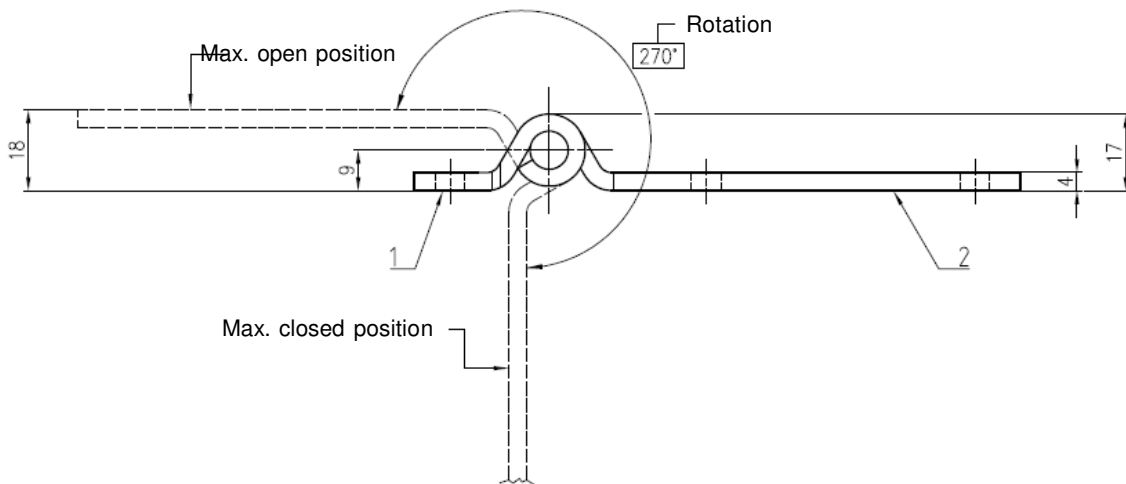
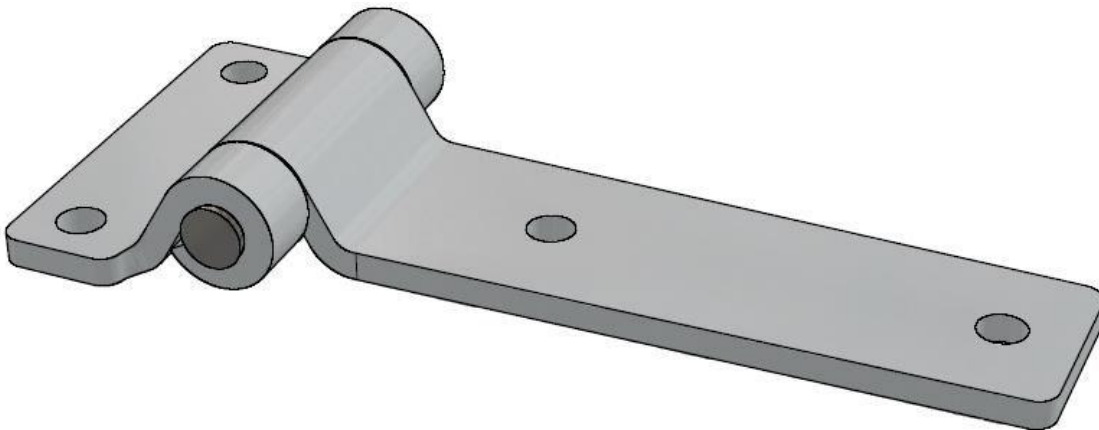


Insert * material "code" into hinge part number

Ref	Part description	Material - Finishing (AZ)	Material - Finishing (BK)
1	Short flange	Fe360 - White zinc Cr6 free	Fe360 - White zinc Cr6 free
2	Long flange	Fe360 - White zinc Cr6 free	Fe360 - White zinc Cr6 free
3	Stud	AISI304	AISI304
4	Grommet (2)	Poliammide	Poliammide



HIG.30105.* - Scharnier

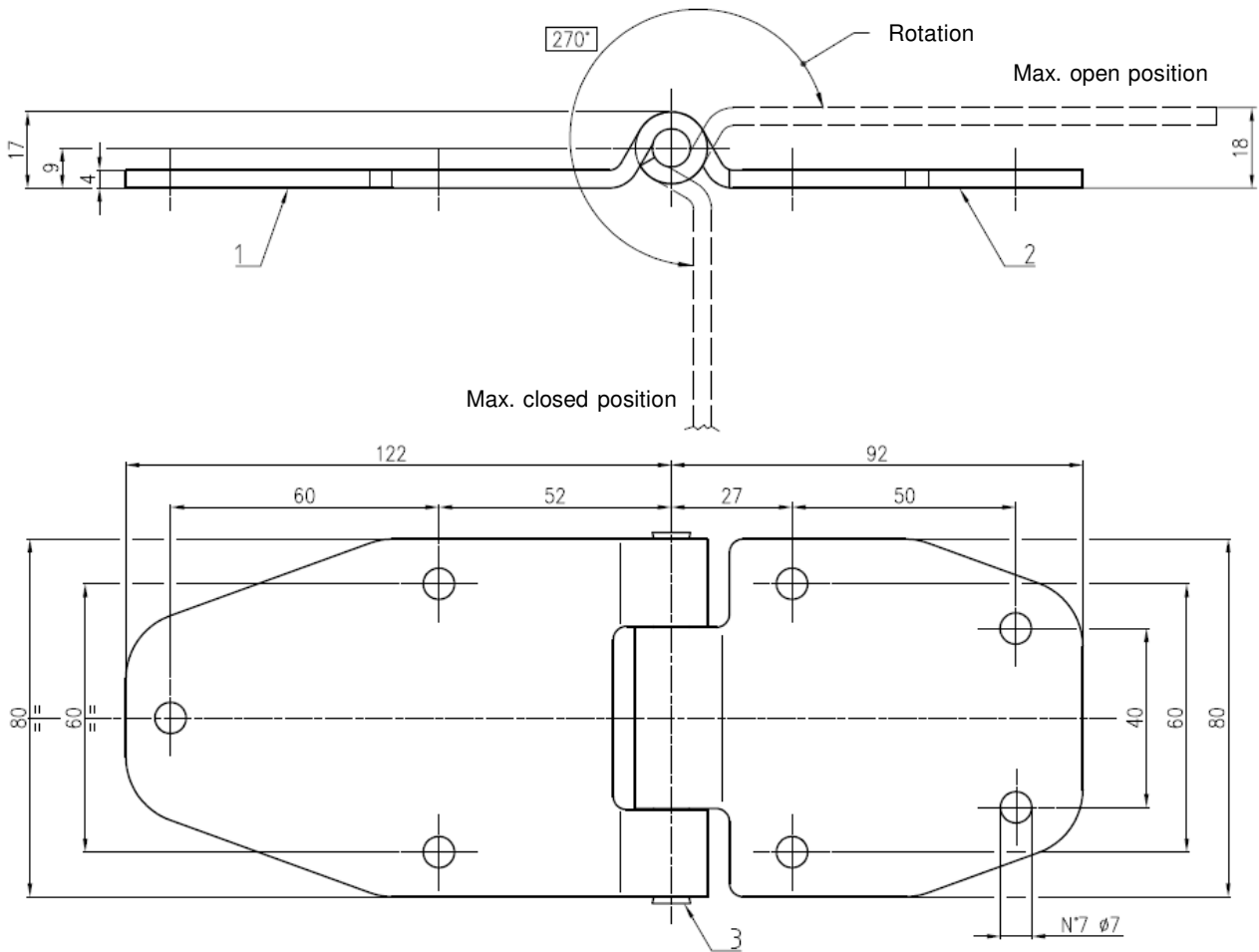
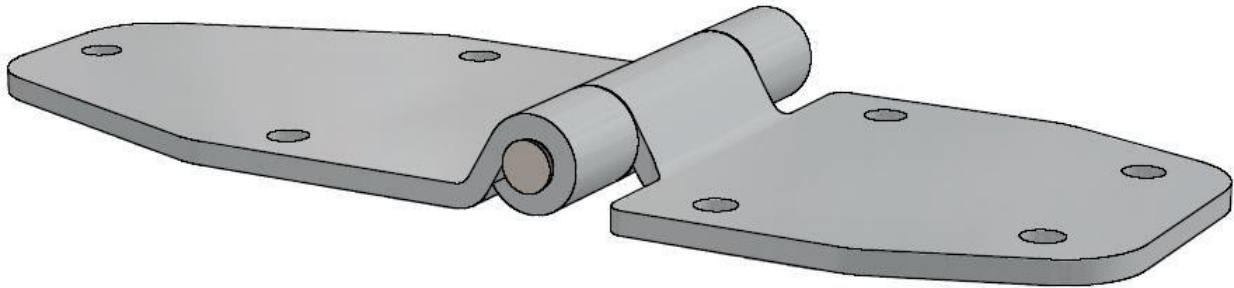


Insert * material "code" into hinge part number

Ref	Part description	Material - Finishing (AZ)	Material - Finishing (BP)
1	Short flange	Fe360 - White zinc Cr6 free	AISI304 - Polished
2	Long flange	Fe360 - White zinc Cr6 free	AISI304 - Polished
3	Stud	AISI304	AISI304



HIG.21480.* - Scharnier

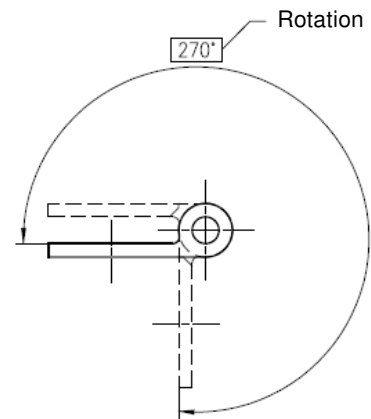
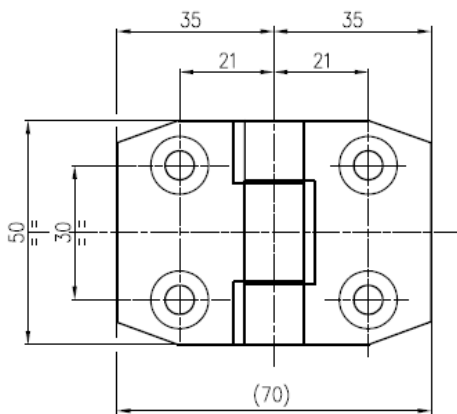
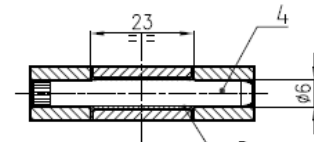
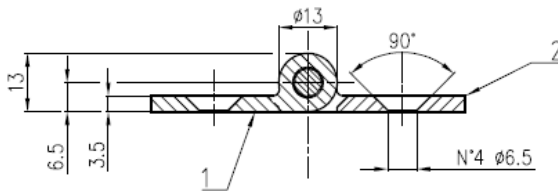
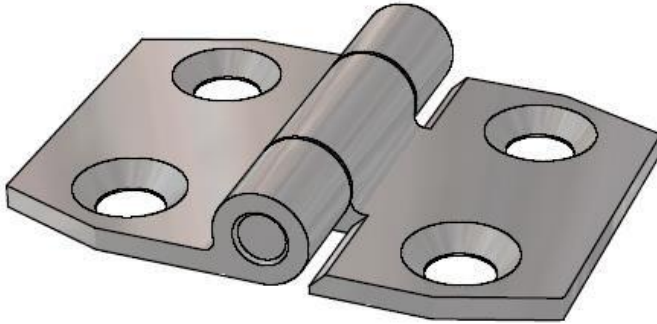


Insert * material "code" into hinge part number

Ref	Part description	Material - Finishing (AZ)	Material - Finishing (BP)
1	Long flange	Fe360 - White zinc Cr6 free	AISI304 - Polished
2	Short flange	Fe360 - White zinc Cr6 free	AISI304 - Polished
3	Stud	AISI304	AISI304



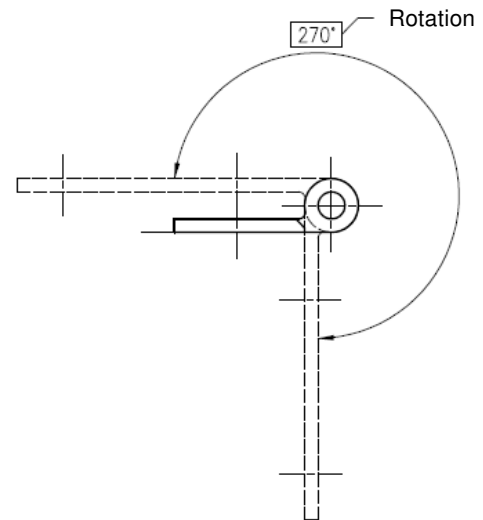
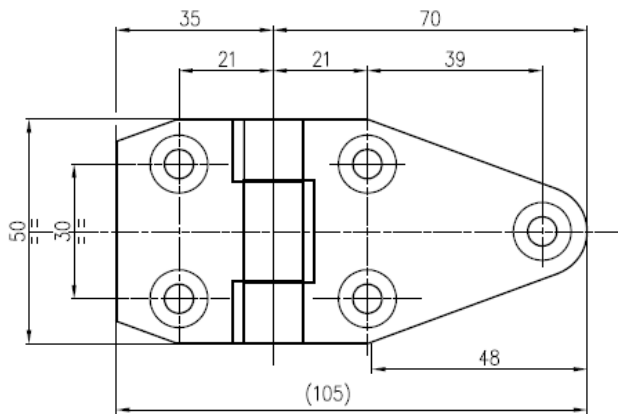
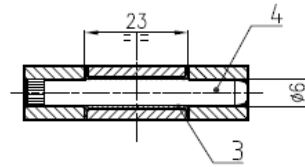
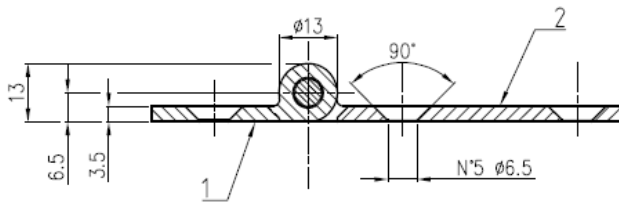
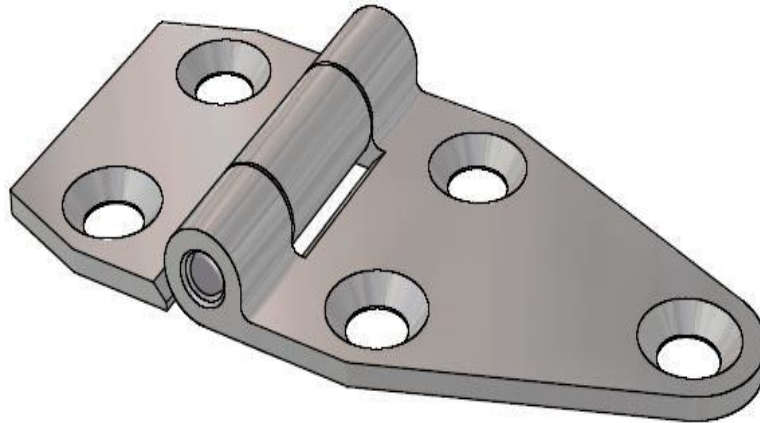
HNG.1050S.AZ -



Ref	Part description	Material - Finishing (AZ)
1	Central flange	C30 - White zinc Cr6 free
2	Side flange	C30 - White zinc Cr6 free
3	Self greasing grommet	Bronze/PTFE
4	Rotation pin	C45 8.8 grade



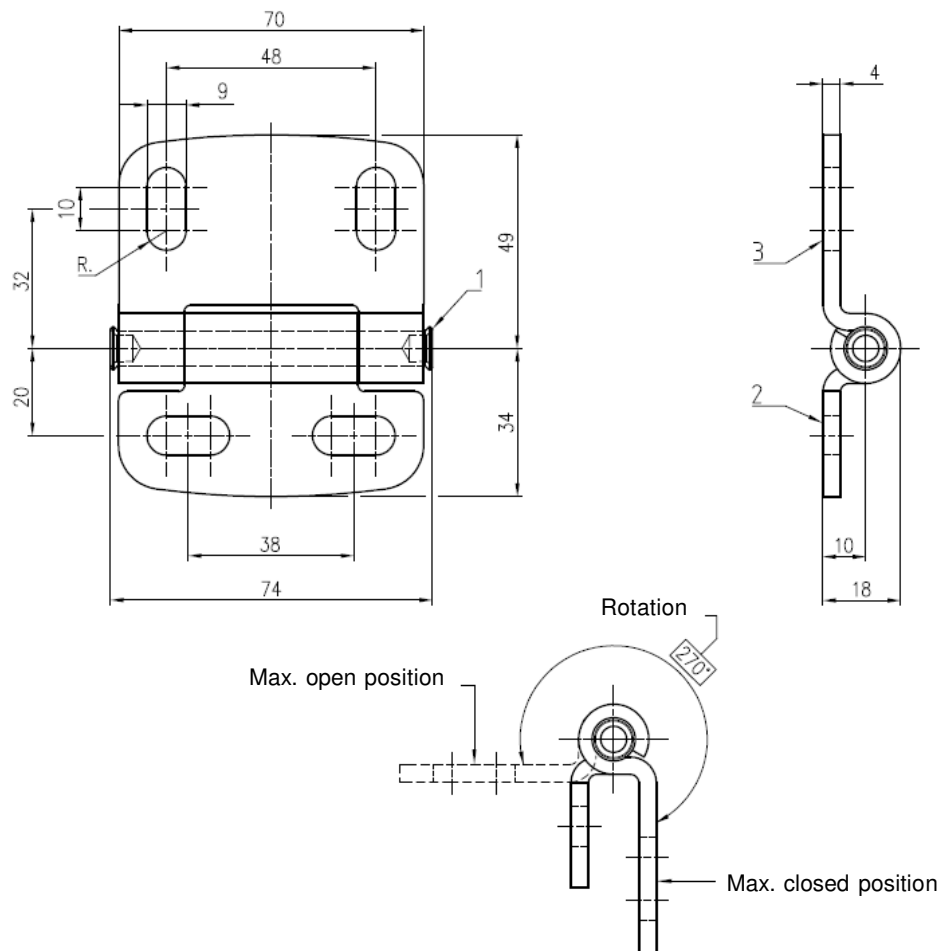
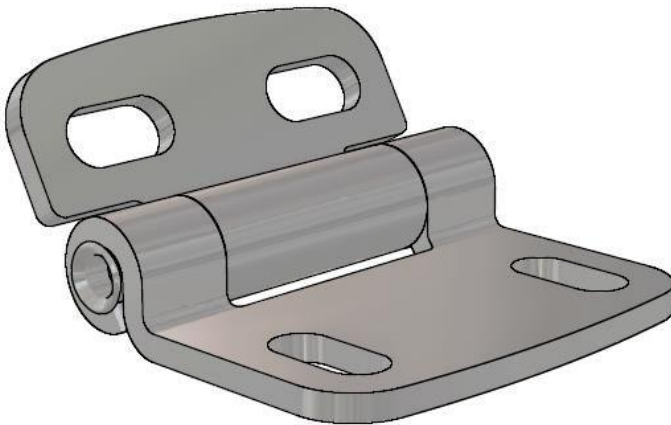
HNG.50105.1Z - Friktionsscharnier



Ref	Part description	Material - Finishing (AZ)
1	Central flange	C30 - White zinc Cr6 free
2	Side flange	C30 - White zinc Cr6 free
3	Self greasing grommet	Bronze/PTFE
4	Rotation pin	C45 8.8 grade



HNG.1083.* -

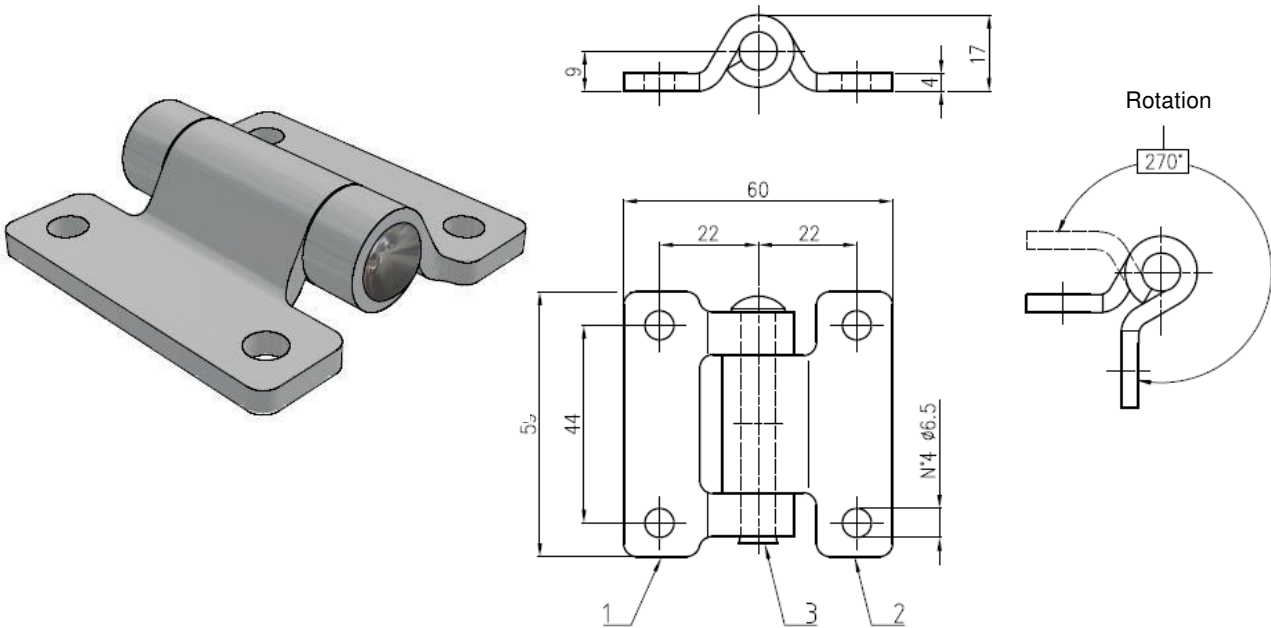


Insert * material "code" into hinge part number

Ref	Part description	Material - Finishing (BP)	Material - Finishing (NX)
1	Stud	AISI304 - Polished	AISI304 - Black enamel coated
2	Fix flange	AISI304 - Polished	AISI304 - Black enamel coated
3	Rotating flange	AISI304 - Polished	AISI304 - Black enamel coated



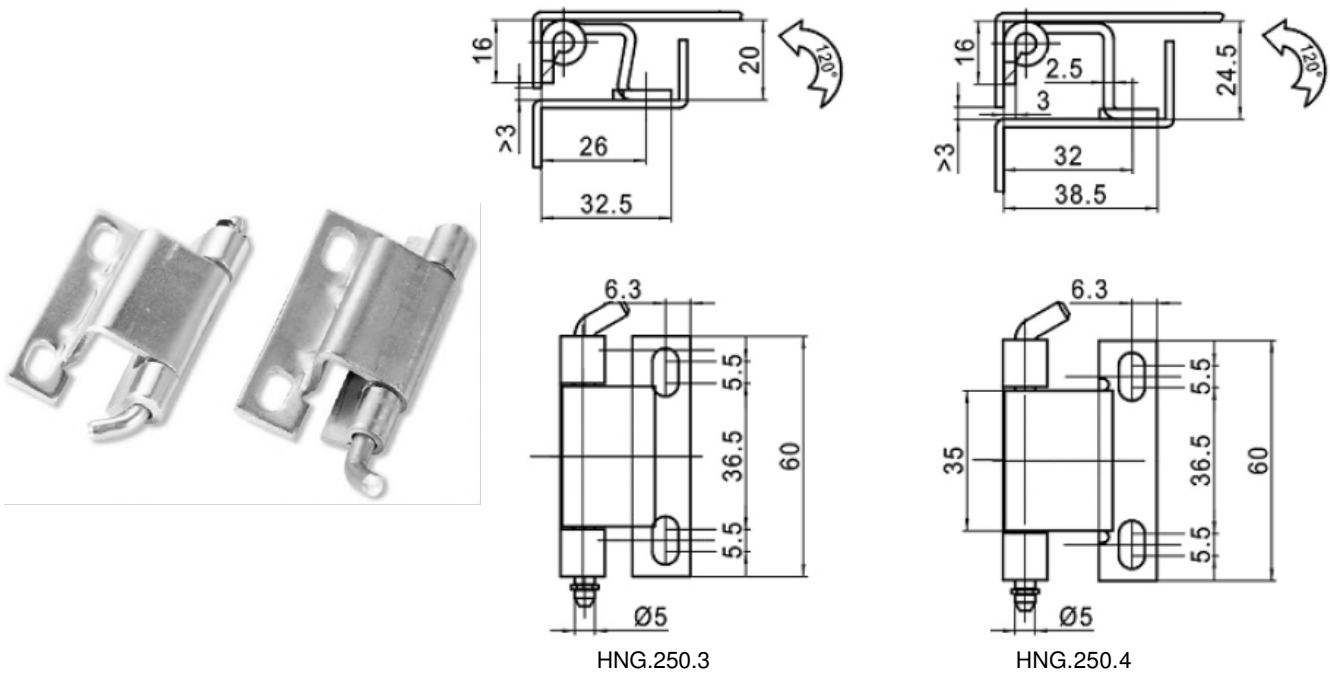
HNG.6059.* -



Insert * material "code" into hinge part number

Ref	Part description	Material - Finishing (AZ)	Material - Finishing (BP)
1	Right flange	Fe360 - White zinc Cr6 free	AISI304 - Polished
2	Left falnge	Fe360 - White zinc Cr6 free	AISI304 - Polished
3	Stud	AISI304	AISI304

HNG.250.* - Scharnier

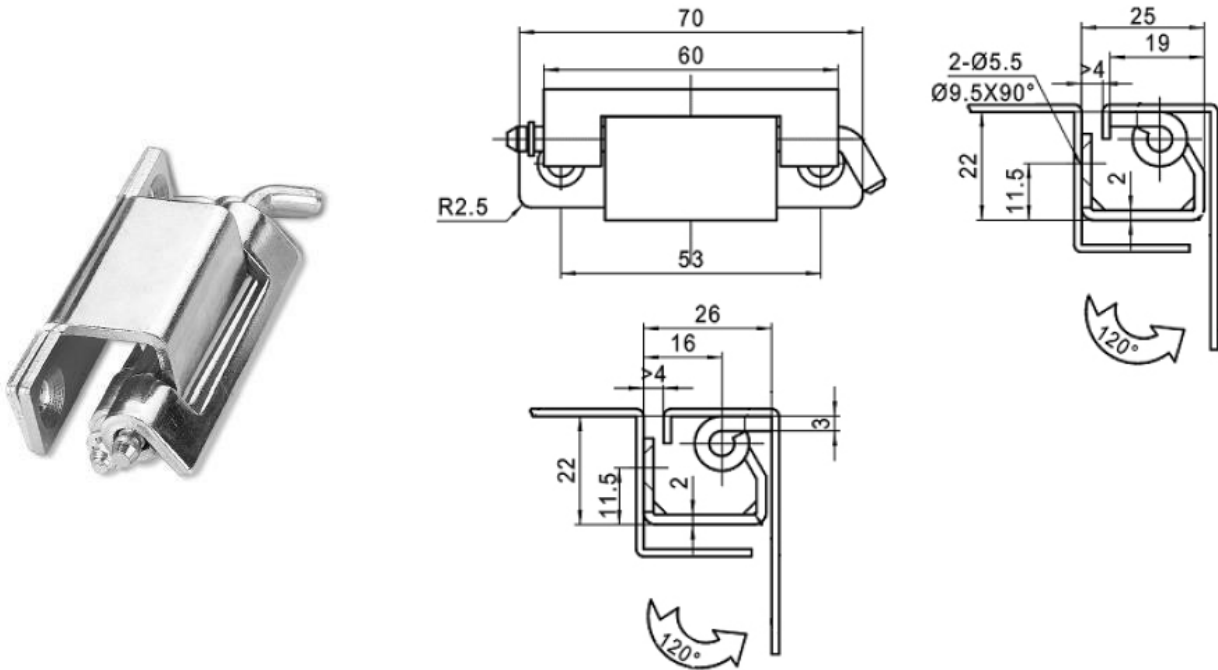


Hinge part number
HNG.250.3
HNG.250.4

Ref	Part description	Material - Finishing
1	Hinge	Steel - White zinc Cr6 free

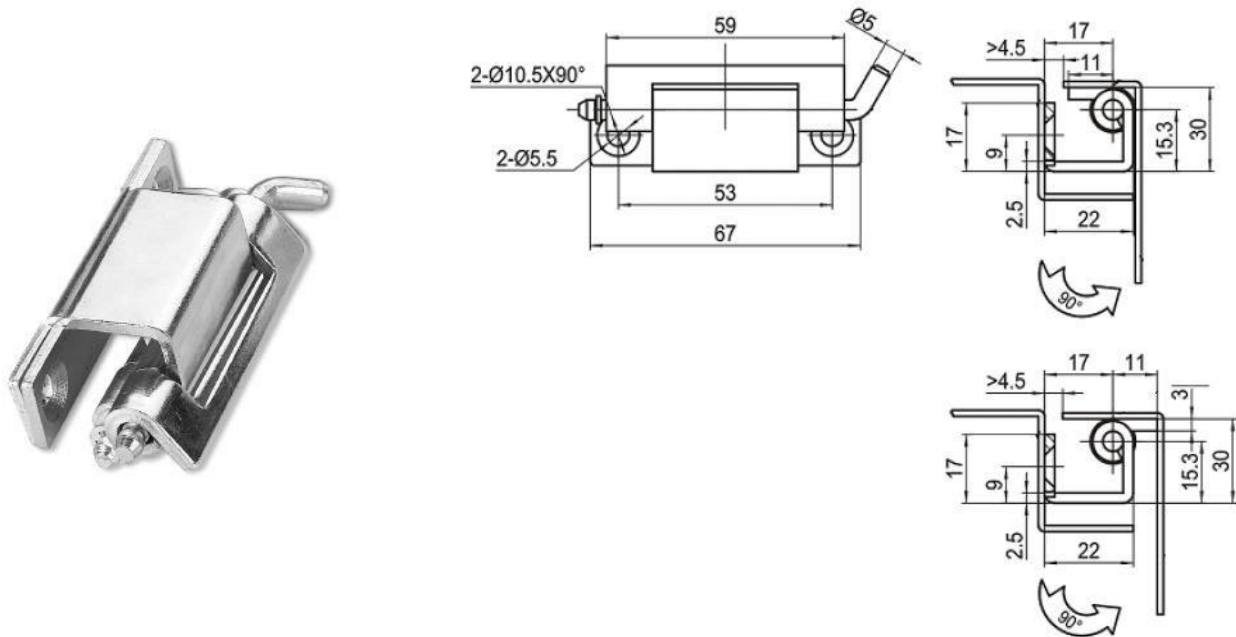


HIG.215.1 - Scharnier



Ref	Part description	Material - Finishing
1	Hinge	Steel - White zinc Cr6 free

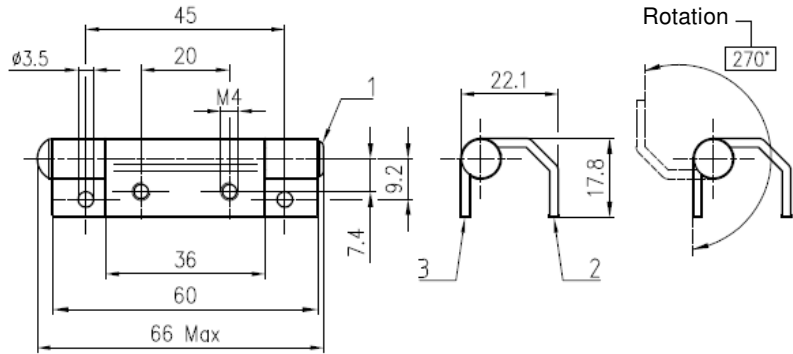
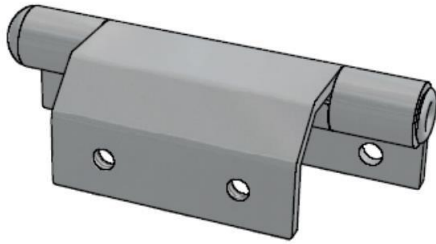
HIG.215.2 - Scharnier



Ref	Part description	Material - Finishing
1	Hinge	Steel - White zinc Cr6 free

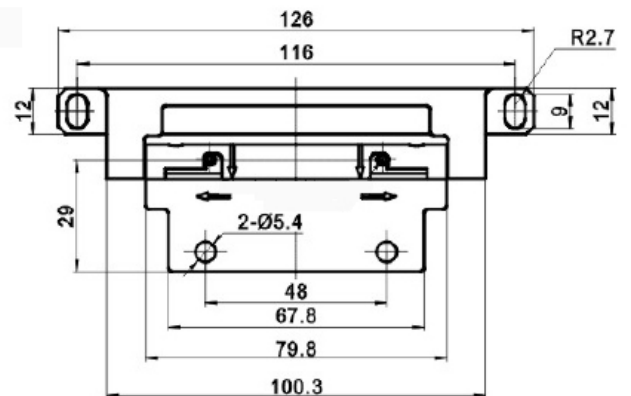
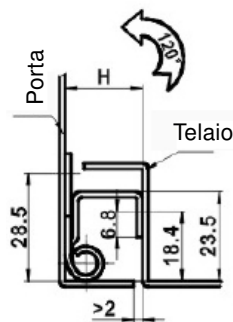
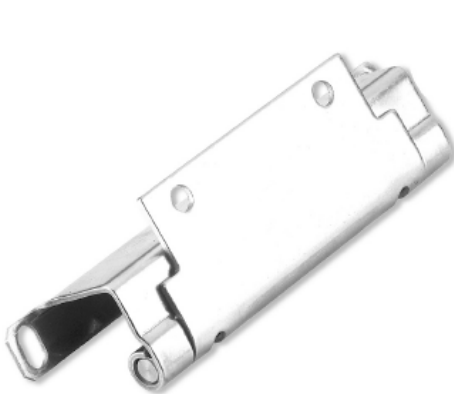


HNG.1002.AZ -



Ref	Part description	Material - Finishing
1	Stud	Steel 4.8 grade - White zinc Cr6 free
2	Rotating flange	DC03 - White zinc Cr6 free
3	Fix flange	DC03 - White zinc Cr6 free

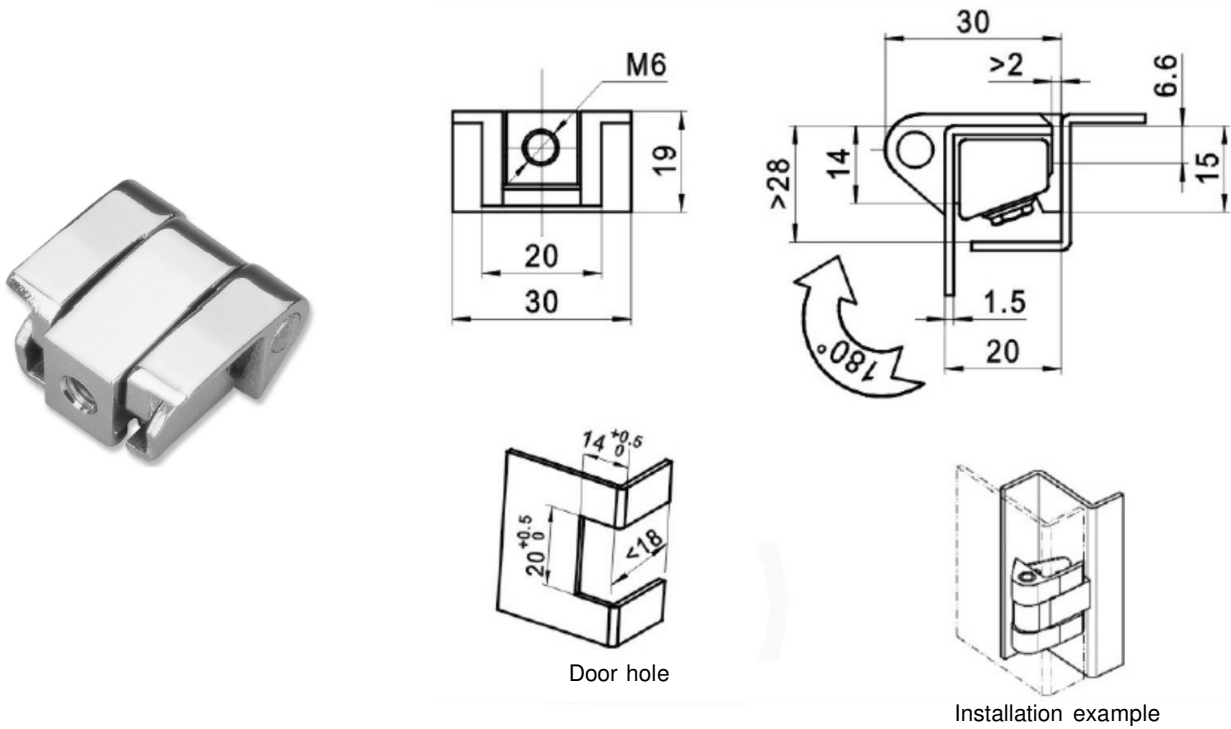
HNG.268.* - Scharnier



Hinge part number	H	Material - Finishing
HNG.268.1	23,9	Steel - White zinc Cr6 free
HNG.268.2	20,5	Steel - White zinc Cr6 free
HNG.268.3	17,5	Steel - White zinc Cr6 free
HNG.268.1A	23,9	Stainless steel (min. 500 pcs.)
HNG.268.2A	20,5	Stainless steel (min. 500 pcs.)
HNG.268.3A	17,5	Stainless steel (min. 500 pcs.)

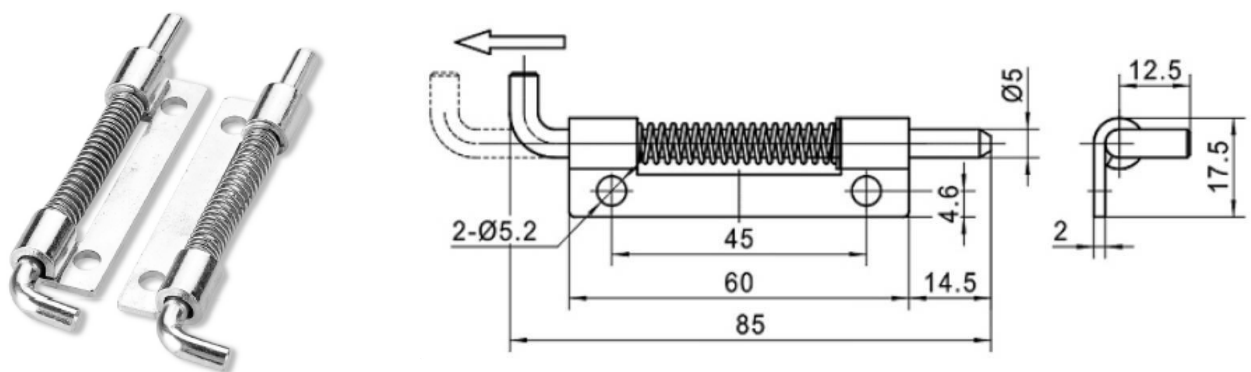


HNG.208 -



Ref	Part description	Material - Finishing
1	Hinge	Zinc alloy - Bright chrome

HNG.225.3* - Scharnier

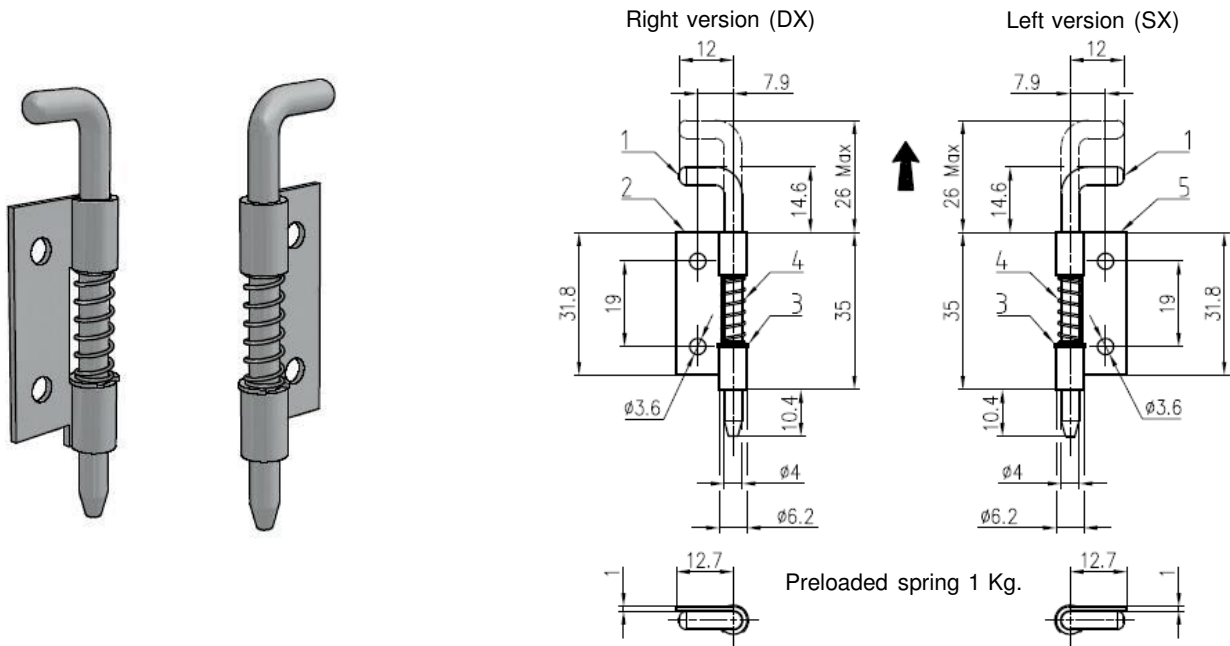


Hinge part number	Rotation
HNG.225.3Y	Right
HNG.225.3Z	Left

Ref	Part description	Material - Finishing
1	Hinge	Steel - White zinc Cr6 free

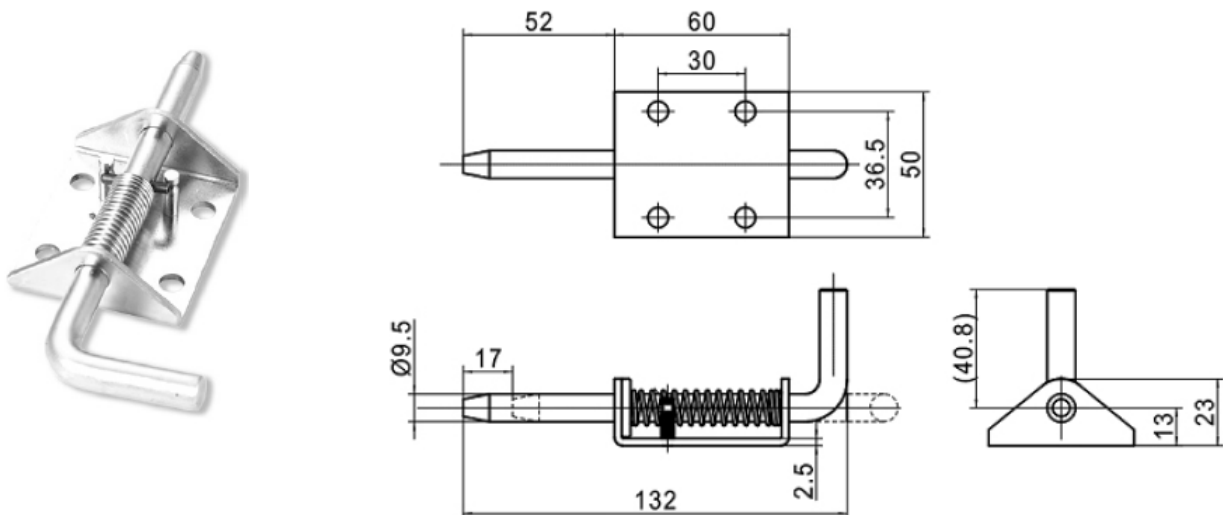


HNG.11DI.AZI | HNG.11SI.AZ - Scharnier



Ref	Part description	Material - Finishing
1	Stud	C10 - White zinc Cr6 free
2	Flange DX/SX	DC03 - White zinc Cr6 free
3	Ring DIN6799	Standard
4	Spring	C72 - White zinc Cr6 free

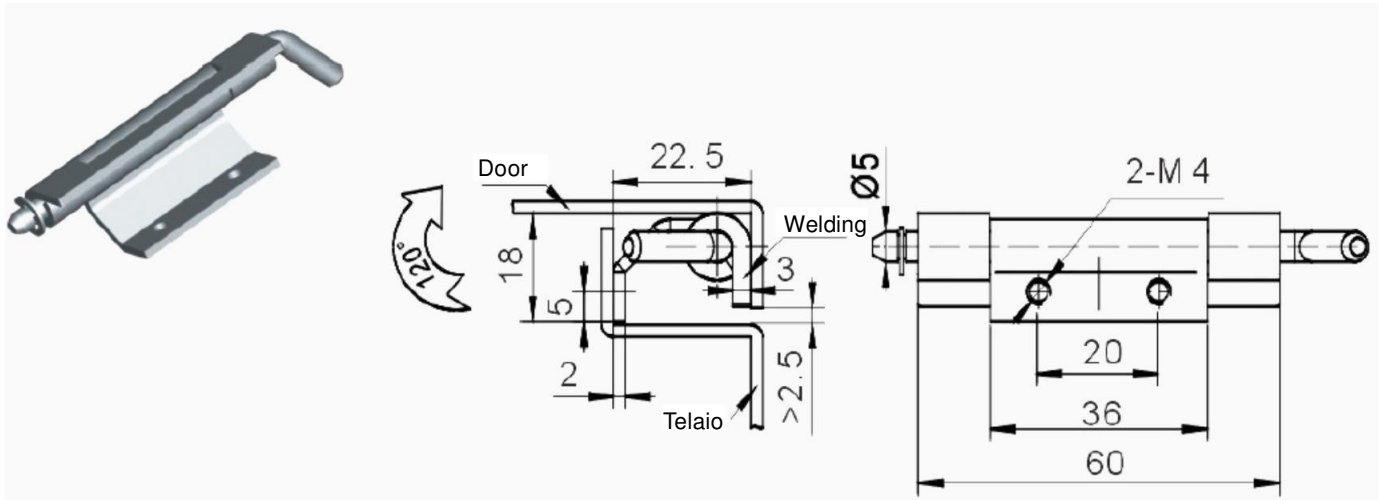
HNG.263 - Scharnier



Ref	Part description	Material - Finishing
1	Hinge	Steel - White zinc Cr6 free



HIG.248 - Scharnier



Ref	Part description	Material - Finishing
1	Hinge	Steel - White zinc Cr6 free