



Einniet- Muttern



Blindnietmuttern

Inhaltsverzeichnis

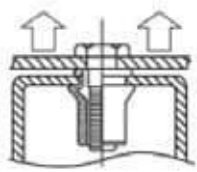
Blindnietmuttern Stahl Chrom 6 frei verzinkt		Seite
FH-RB	Flachkopf, Stahl Cr 6 frei verzinkt	4
FH-RBC	geschlossen, Flachkopf, Stahl Cr 6 frei verzinkt	
RH-RB	Mikrokopf, Stahl Cr 6 frei verzinkt	5
RH-RBC	geschlossen, Mikrokopf, Stahl Cr 6 frei verzinkt	
FH-KB	Flachkopf, Rändelschaft, Stahl Cr 6 frei verzinkt	6
FH-KBC	geschlossen, Flachkopf, Rändelschaft, Stahl Cr 6 frei verzinkt	
RH-KB	Mikrokopf, Rändelschaft, Stahl Cr 6 frei verzinkt	7
RH-KBC	geschlossen, Mikrokopf, Rändelschaft, Stahl Cr 6 frei verzinkt	
CH-RB	Senkkopf, Stahl Cr 6 frei verzinkt	8
CH-KB	Senkkopf, Rändelschaft, Stahl Cr 6 frei verzinkt	
FH-SHB	Flachkopf, teilweiser 6-Kant Schaft, Stahl Cr 6 frei verzinkt	9
FH-SHBC	geschlossen, Flachkopf, teilweiser 6-Kant Schaft, Stahl Cr 6 frei verzinkt	
FH-FHB	Flachkopf, 6-Kant Schaft, Stahl Cr 6 frei verzinkt	10
FH-FHBC	geschlossen, Flachkopf, 6-Kant Schaft, Stahl Cr 6 frei verzinkt	
RHH-FHB	Mikrokopf, 6-Kant Schaft, Stahl Cr 6 frei verzinkt	
RHH-FHBC	geschlossen, Mikrokopf, 6-Kant Schaft, Stahl Cr 6 frei verzinkt	11
FH-IHB	Flachkopf, teilw. 6-Kant Schaft, innen 6-Kant , Stahl Cr 6 frei verzinkt	
RHH-IHB	Mikrokopf, teilweiser 6-Kant Schaft, Stahl Cr 6 frei verzinkt	12

Blindnietmuttern

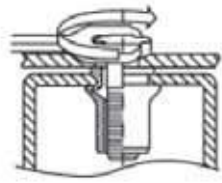
Inhaltsverzeichnis

Blindnietmuttern Edelstahl		Seite
FH-RB/SS	Flachkopf, Edelstahl	
FH-RBC/SS	geschlossen, Flachkopf, Edelstahl	13
FH-KB/SS	Flachkopf, Rändelschaft, Edelstahl	
FH-KBC/SS	geschlossen, Flachkopf, Rändelschaft, Edelstahl	14
RH-RB/SS	Mikrokopf, Edelstahl	
RH-RBC/SS	geschlossen, Mikrokopf, Edelstahl	15
RH-KB/SS	Mikrokopf, Rändelschaft, Edelstahl	
RH-KBC/SS	geschlossen, Mikrokopf, Rändelschaft, Edelstahl	16
CH-RB/SS	Senkkopf, Edelstahl	
CH-KB/SS	Senkkopf, Rändelschaft, Edelstahl	17
RHH-IHB/SS	Mikrokopf, teilweiser 6-Kant Schaft, innen 6-Kant, Edelstahl	18
RHH-IHBC/SS	geschlossen, Mikrokopf, teilweiser 6-Kant Schaft, innen 6-Kant, Edelstahl	
FH-IHB/SS	Flachkopf, teilweiser 6-Kant Schaft, innen 6-Kant, Edelstahl	19
FH-IHBC/SS	geschlossen, Flachkopf, teilweiser 6-Kant Schaft, innen 6-Kant, Edelstahl	

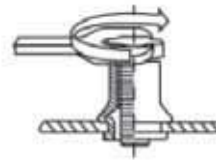
Blindnietmuttern Aluminium		Seite
FH-RB/AL	Flachkopf, Aluminium	20
FH-KB/AL	Flachkopf, Rändelschaft, Aluminium	
RH-RB/AL	Mikrokopf, Aluminium	21
RH-KB/AL	Mikrokopf, Rändelschaft, Aluminium	



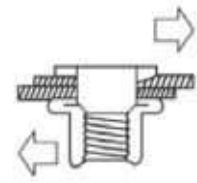
Axiale Prüflast



Anzugsdrehmoment



Drehmoment für die Schließkraft



Scherkraft

Tabelle 1: Axiale Prüflast

Einheit: N

Blindnietmuttern	Mechanische Eigenschaften		M3	M4	M5	M6	M8	M10	M12
	Rund und Hex, Kleiner Senkkopf	Prüflast	Stahl/Edelstahl	3900	6800	11500	16500	25000	32000
Aluminium			1900	4000	6500	7800	12300	17500	...

Tabelle 2: Anzugsdrehmoment

Einheit: Nm

Gewinde	M3	M4	M5	M6	M8	M10	M12
Stahl/Edelstahl · Flachkopf	2	5	8.5	15	26	50	80
Stahl/Edelstahl · Senkkopf	1	4	8	15	26	45	70
Stahl/Edelstahl · Mikrokopf	1	3	6	11	20	32	50
Aluminium · Flach- und Mikrokopf	0.7	2.5	5	8	20	25	...

Tabelle 3: Drehmoment für die Schließkraft

Einheit: Nm

Gewinde	M3	M4	M5	M6	M8	M10	M12
Stahl/Edelstahl · Flachkopf	0.5	1	2	4.5	5.5	11	30
Stahl/Edelstahl · Senkkopf	0.4	0.8	1.5	3.5	4.5	8.5	24
Stahl/Edelstahl · Mikrokopf	0.25	0.9	1.5	3.5	5	6.5	21
Aluminium · Flach- und Mikrokopf	0.2	0.7	1.2	2.5	4	5	16

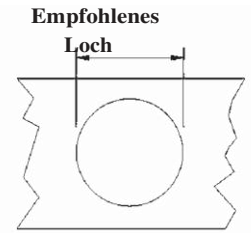
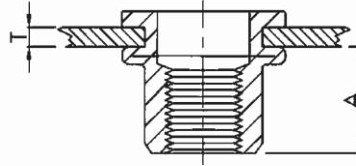
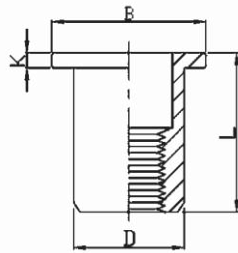
Tabelle 4: Scherkraft

Einheit: N

Blindnietmuttern	Mechanische Eigenschaften		M3	M4	M5	M6	M8	M10	M12
	Rund und Hex, Kleiner Senkkopf	Scherkraft	Stahl/Edelstahl	900	1500	2000	3000	4400	5000
Aluminium			600	1000	1200	2000	2400	3800	...

Material: Stahl (C 1008). Edelstahl (ANSI 1304). Aluminium (AlMg 2.5)

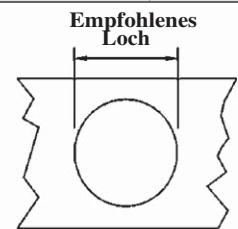
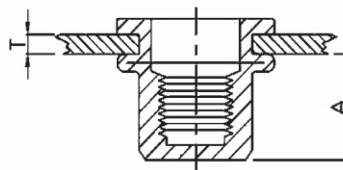
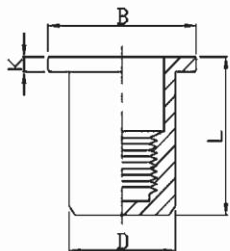
TechFast GmbH – www.techfast.de - +49 8296 285 9990 – info@techfast.de



FH-RB

BLINDNIETMUTTERN, FLACHKOPF, STAHL CHROM 6 FREI VERZINKT

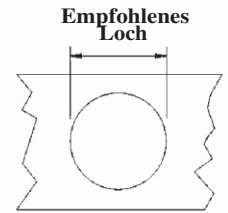
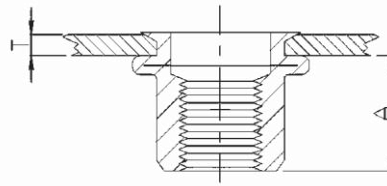
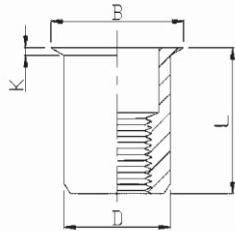
Gewinde	Bezeichnung	Blechdicke Min - Max T [mm]	A Ref	Empfohlenes Loch + 0.1/- 0 [mm]	D [mm]	B [mm]	K [mm]	L [mm]
M3 x 0.5	FH-RB-0315	0.5-1.5	4.7	5.0	4.9	7.2	0.8	8.5
M3 x 0.5	FH-RB-0325	1.5-2.5	4.7	5.0	4.9	7.2	0.8	9.5
M4 x 0.7	FH-RB-0420	0.5-2.0	6.0	6.0	5.9	8.5	0.8	10.5
M4 x 0.7	FH-RB-0435	2.0-3.5	6.0	6.0	5.9	8.5	0.8	12.0
M5 x 0.8	FH-RB-0525	0.5-2.5	7.5	7.0	6.9	10.0	1.0	13.0
M5 x 0.8	FH-RB-0550	2.5-5.0	8.5	7.0	6.9	10.0	1.0	17.0
M6 x 1.0	FH-RB-0630	0.5-3.0	9.2	9.0	8.9	12.3	1.3	15.5
M6 x 1.0	FH-RB-0655	3.0-5.5	9.2	9.0	8.9	12.3	1.3	18.0
M8 x 1.25	FH-RB-0835	0.5-3.5	11.5	11.0	10.9	15.0	1.5	18.5
M8 x 1.25	FH-RB-0860	3.5-6.0	11.5	11.0	10.9	15.0	1.5	21.0
M10 x 1.5	FH-RB-1025	0.5-2.5	11.5	13.0	12.9	16.3	1.6	17.0
M10 x 1.5	FH-RB-1040	2.5-4.0	12.5	13.0	12.9	17.0	1.6	21.0
M12 x 1.75	FH-RB-1240	1.0-4.0	13.5	15.0	14.9	18.0	1.7	22.0
M12 x 1.75	FH-RB-1265	4.0-6.5	13.5	15.0	14.9	18.0	1.7	25.0
M10 x 1.5	FH-RB-1035(12H)	1.0-3.5	11.0	12.0	11.9	16.0	1.5	19.0
M12 x 1.75	FH-RB-1240(16H)	1.0-4.0	16.0	16.0	15.9	22.0	2.0	25.0



FH-RBC

BLINDNIETMUTTERN GESCHLOSSEN, FLACHKOPF, STAHL CHROM 6 FREI VERZINKT

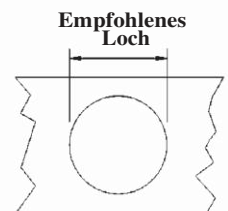
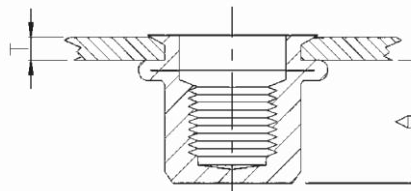
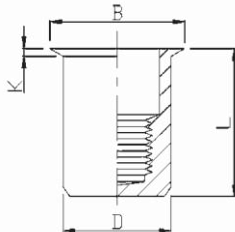
Gewinde	Bezeichnung	Blechdicke Min - Max T [mm]	A Ref	Empfohlenes Loch + 0.1/- 0 [mm]	D [mm]	B [mm]	K [mm]	L [mm]
M4 x 0.7	FH-RBC-0420	0.5-2.0	11.3	6.0	5.9	9.0	0.8	16.0
M4 x 0.7	FH-RBC-0440	2.0-4.0	11.3	6.0	5.9	9.0	0.8	18.0
M5 x 0.8	FH-RBC-0525	0.5-2.5	11.5	7.0	6.9	10.0	1.0	17.0
M5 x 0.8	FH-RBC-0550	3.0-5.0	11.5	7.0	6.9	10.0	1.0	19.0
M6 x 1.0	FH-RBC-0630	0.5-3.0	12.7	9.0	8.9	12.3	1.3	19.0
M6 x 1.0	FH-RBC-0650	3.0-5.0	12.7	9.0	8.9	12.3	1.3	21.0
M8 x 1.25	FH-RBC-0830	0.5-3.0	14.8	11.0	10.9	15.0	1.5	21.5
M8 x 1.25	FH-RBC-0855	3.0-5.5	14.8	11.0	10.9	15.0	1.5	24.0
M10 x 1.5	FH-RBC-1040	1.0-4.0	19.2	13.0	12.9	17.0	1.6	27.0



RH-RB

BLINDNIETMUTTERN, MIKROKOPF, STAHL CHROM 6 FREI VERZINKT

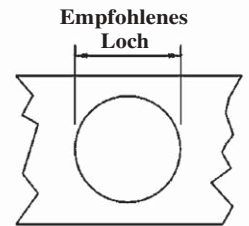
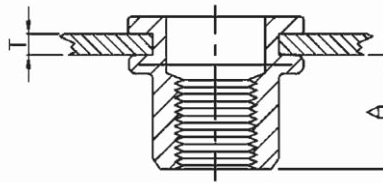
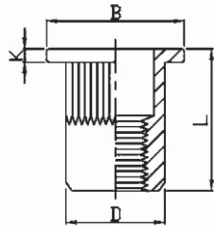
Gewinde	Bezeichnung	Blechdicke Min - Max T [mm]	A Ref	Empfohlenes Loch + 0.1/-0 [mm]	D [mm]	B [mm]	K [mm]	L [mm]
M3 x 0.5	RH-RB-0315	0.5-1.5	6.2	5.0	4.9	6.0	0.5	9.0
M4 x 0.7	RH-RB-0420	0.5-2.0	6.5	6.0	5.9	7.0	0.5	10.5
M4 x 0.7	RH-RB-0440	2.0-4.0	6.5	6.0	5.9	7.0	0.5	13.0
M5 x 0.8	RH-RB-0520	0.5-2.0	7.0	7.0	6.9	8.0	0.5	11.5
M5 x 0.8	RH-RB-0540	2.0-4.0	7.0	7.0	6.9	8.0	0.5	13.0
M6 x 1.0	RH-RB-0625	0.5-2.5	8.5	9.0	8.9	10.0	0.6	14.0
M6 x 1.0	RH-RB-0650	2.5-5.0	8.5	9.0	8.9	10.0	0.6	17.0
M8 x 1.25	RH-RB-0830	0.5-3.0	10.0	11.0	10.9	12.0	0.6	16.5
M8 x 1.25	RH-RB-0850	3.0-5.0	10.0	11.0	10.9	12.0	0.6	18.5
M10 x 1.5	RH-RB-1030	0.5-3.0	13.0	13.0	12.9	14.0	0.7	17.7
M10 x 1.5	RH-RB-1055	3.0-5.5	13.0	13.0	12.9	14.0	0.7	21.0



RH-RBC

BLINDNIETMUTTERN GESCHLOSSEN, MIKROKOPF, STAHL CHROM 6 FREI VERZINKT

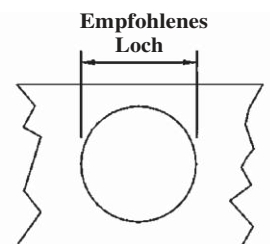
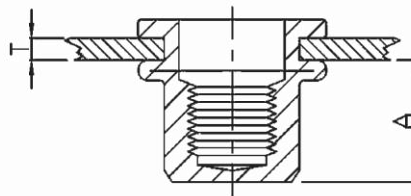
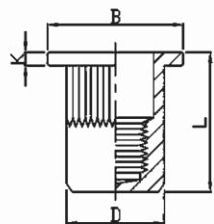
Gewinde	Bezeichnung	Blechdicke Min - Max T [mm]	A Ref	Empfohlenes Loch + 0.1 / -0 [mm]	D [mm]	B [mm]	K [mm]	L [mm]
M4 x 0.7	RH-RBC-0420	0.5-2.0	11.0	6.0	5.9	7.0	0.5	15.0
M4 x 0.7	RH-RBC-0430	2.0-3.0	11.0	6.0	5.9	7.0	0.5	16.0
M5 x 0.8	RH-RBC-0520	0.5-2.0	12.5	7.0	6.9	8.0	0.5	16.5
M5 x 0.8	RH-RBC-0535	2.0-3.5	12.5	7.0	6.9	8.0	0.5	17.5
M6 x 1.0	RH-RBC-0630	0.5-3.0	15.5	9.0	8.9	10.0	0.6	20.5
M6 x 1.0	RH-RBC-0645	3.0-4.5	15.5	9.0	8.9	10.0	0.6	22.0
M8 x 1.25	RH-RBC-0830	1.0-3.0	17.0	11.0	10.9	12.0	0.6	23.0
M8 x 1.25	RH-RBC-0845	3.0-4.5	17.0	11.0	10.9	12.0	0.6	24.5
M10 x 1.5	RH-RBC-1030	1.0-3.0	18.2	13.0	12.9	14.0	0.7	24.5
M10 x 1.5	RH-RBC-1050	3.0-5.0	18.2	13.0	12.9	14.0	0.7	26.0



FH-KB

BLINDNIETMUTTERN, FLACHKOPF, RÄNDELSCHAFT, STAHL CHROM 6 FREI VERZINKT

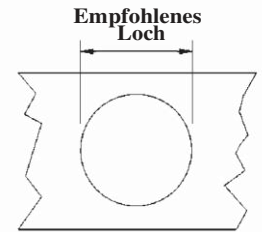
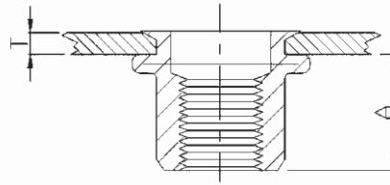
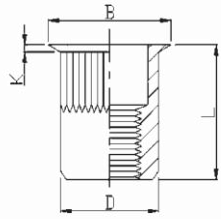
Gewinde	Bezeichnung	Blechdicke Min - Max T [mm]	A Ref	Empfohlenes Loch + 0.1 / -0 [mm]	D [mm]	B [mm]	K [mm]	L [mm]
M3 x 0.5	FH-KB-0315	0.5-1.5	6.0	5.0	4.9	8.0	0.8	10.0
M4 x 0.7	FH-KB-0420	0.5-2.0	6.0	6.0	5.9	9.0	0.8	10.5
M4 x 0.7	FH-KB-0435	2.0-3.5	6.0	6.0	5.9	9.0	0.8	12.0
M5 x 0.8	FH-KB-0525	0.5-2.5	7.5	7.0	6.9	10.0	1.0	13.0
M5 x 0.8	FH-KB-0550	2.5-5.0	8.5	7.0	6.9	10.0	1.0	16.5
M6 x 1.0	FH-KB-0630	0.5-3.0	9.2	9.0	8.9	12.3	1.3	15.5
M6 x 1.0	FH-KB-0655	3.0-5.5	10.5	9.0	8.9	12.3	1.3	19.5
M8 x 1.25	FH-KB-0835	1.0-3.5	11.5	11.0	10.9	14.5	1.5	18.5
M8 x 1.25	FH-KB-0860	3.5-6.0	11.5	11.0	10.9	14.5	1.5	21.0
M10 x 1.5	FH-KB-1040	1.0-4.0	13.5	13.0	12.9	17.0	1.7	21.5
M10 x 1.5	FH-KB-1065	4.0-6.5	13.5	13.0	12.9	17.0	1.7	24.0
M12 x 1.75	FH-KB-1240	1.0-4.0	13.5	15.0	14.9	18.0	1.7	22.0
M12 x 1.75	FH-KB-1265	4.0-6.5	14.0	15.0	14.9	18.0	1.7	25.0
M10 x 1.5	FH-KB-1035 (12H)	1.0-3.5	11.0	12.0	11.9	16.0	1.6	19.0
M12 x 1.75	FH-KB-1240 (16H)	1.0-4.0	15.0	16.0	15.9	22.0	2.0	25.0



FH-KBC

BLINDNIETMUTTERN GESCHLOSSEN, FLACHKOPF, RÄNDELSCHAFT, STAHL CHROM 6 FREI VERZINKT

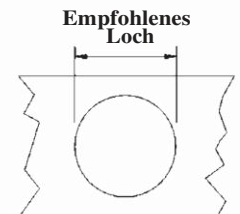
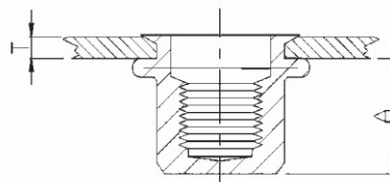
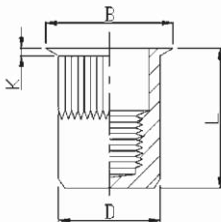
Gewinde	Bezeichnung	Blechdicke Min - Max T [mm]	A Ref	Empfohlenes Loch + 0.1 / -0 [mm]	D [mm]	B [mm]	K [mm]	L [mm]
M4 x 0.7	FH-KBC-0420	0.5-2.0	11.3	6.0	5.9	9.0	0.8	16.0
M4 x 0.7	FH-KBC-0440	2.0-4.0	11.3	6.0	5.9	9.0	0.8	18.0
M5 x 0.8	FH-KBC-0530	0.5-3.0	11.5	7.0	6.9	10.0	1.0	17.0
M5 x 0.8	FH-KBC-0550	3.0-5.0	11.5	7.0	6.9	10.0	1.0	19.0
M6 x 1.0	FH-KBC-0630	0.5-3.0	12.7	9.0	8.9	12.3	1.3	19.2
M6 x 1.0	FH-KBC-0650	3.0-5.0	12.7	9.0	8.9	12.3	1.3	21.0
M8 x 1.25	FH-KBC-0830	0.5-3.0	14.8	11.0	10.9	15.0	1.5	21.5
M8 x 1.25	FH-KBC-0855	3.0-5.5	14.8	11.0	10.9	15.0	1.5	24.0
M10 x 1.5	FH-KBC-1040	1.0-4.0	19.2	13.0	12.9	17.0	1.6	27.0



RH-KB

BLINDNIETMUTTERN, MIKROKOPF, RÄNDELSCHAFT, STAHL CHROM 6 FREI VERZINKT

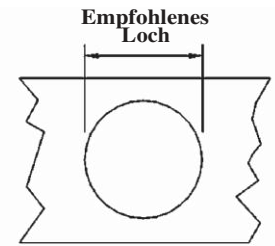
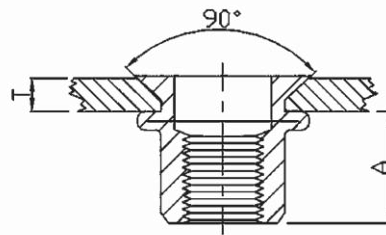
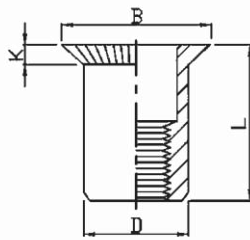
Gewinde	Bezeichnung	Blechdicke Min - Max T [mm]	A Ref	Empfohlenes Loch + 0.1 / - 0 [mm]	D [mm]	B [mm]	K [mm]	L [mm]
M3 x 0.5	RH-KB-0320	0.5-2.0	6.2	5.0	4.9	6.0	0.5	9.0
M4 x 0.7	RH-KB-0420	0.5-2.0	7.0	6.0	5.9	7.0	0.5	11.2
M4 x 0.7	RH-KB-0440	2.0-4.0	7.0	6.0	5.9	7.0	0.5	13.0
M5 x 0.8	RH-KB-0520	0.5-2.0	7.0	7.0	6.9	8.0	0.5	11.5
M5 x 0.8	RH-KB-0540	2.0-4.0	7.0	7.0	6.9	8.0	0.5	13.0
M6 x 1.0	RH-KB-0625	0.5-2.5	8.5	9.0	8.9	10.0	0.6	14.0
M6 x 1.0	RH-KB-0650	2.5-5.0	8.5	9.0	8.9	10.0	0.6	16.0
M8 x 1.25	RH-KB-0830	0.5-3.0	10.0	11.0	10.9	12.0	0.65	16.5
M8 x 1.25	RH-KB-0850	3.0-5.0	10.0	11.0	10.9	12.0	0.65	18.5
M10 x 1.5	RH-KB-1035	1.0-3.5	12.5	13.0	12.9	14.0	0.7	19.5
M10 x 1.5	RH-KB-1060	3.5-6.0	12.5	13.0	12.9	14.0	0.7	22.0
M10 x 1.5	RH-KB-1035(12H)	1.0-3.5	12.5	12.0	11.9	13.0	0.7	19.5
M12 x 1.75	RH-KB-1240	1.0-4.0	16.2	16.0	15.9	17.6	0.75	24.2



RH-KBC

BLINDNIETMUTTERN GESCHLOSSEN, MIKROKOPF, RÄNDELSCHAFT, STAHL CHROM 6 FREI VERZINKT

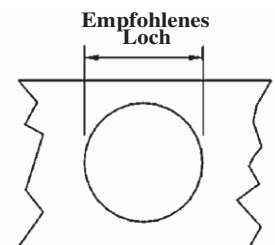
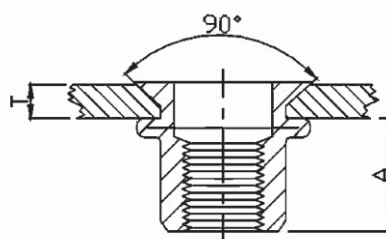
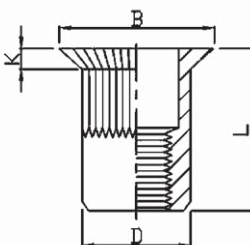
Gewinde	Bezeichnung	Blechdicke Min - Max T [mm]	A Ref	Empfohlenes Loch + 0.1 / - 0 [mm]	D [mm]	B [mm]	K [mm]	L [mm]
M4 x 0.7	RH-KBC-0420	0.5-2.0	11.0	6.0	5.9	7.0	0.5	15.0
M4 x 0.7	RH-KBC-0435	2.0-3.5	11.0	6.0	5.9	7.0	0.5	16.5
M5 x 0.8	RH-KBC-0520	0.5-2.0	12.5	7.0	6.9	8.0	0.5	16.5
M5 x 0.8	RH-KBC-0535	2.0-3.5	12.5	7.0	6.9	8.0	0.5	18.0
M6 x 1.0	RH-KBC-0630	0.5-3.0	15.5	9.0	8.9	10.0	0.6	20.5
M6 x 1.0	RH-KBC-0645	3.0-4.5	15.5	9.0	8.9	10.0	0.6	22.0
M8 x 1.25	RH-KBC-0830	0.5-3.0	17.0	11.0	10.9	12.0	0.65	23.0
M8 x 1.25	RH-KBC-0845	3.0-4.5	17.0	11.0	10.9	12.0	0.65	24.5
M10 x 1.5	RH-KBC-1030	1.0-3.0	18.2	13.0	12.9	14.0	0.7	24.5
M10 x 1.5	RH-KBC-1050	3.0-5.0	18.2	13.0	12.9	14.0	0.7	26.0



CH-RB

BLINDNIETMUTTERN, SENKKOPF, STAHL CHROM 6 FREI VERZINKT

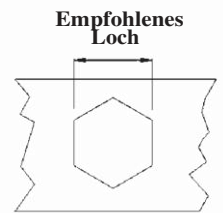
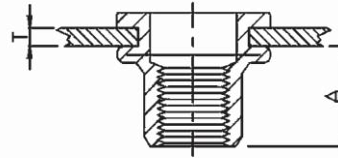
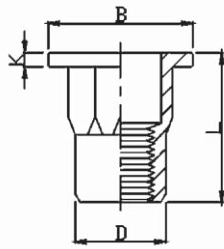
Gewinde	Bezeichnung	Blechdicke Min - Max T [mm]	A Ref	Empfohlenes Loch + 0.1 / -0 [mm]	D [mm]	B [mm]	K [mm]	L [mm]
M4 x 0.7	CH-RB-0430	1.5-3.0	6.5	6.0	5.9	9.0	1.5	12.0
M5 x 0.8	CH-RB-0535	1.5-3.5	7.5	7.0	6.9	10.0	1.5	13.0
M6 x 1.0	CH-RB-0640	1.5-4.0	9.0	9.0	8.9	12.0	1.5	15.5
M8 x 1.25	CH-RB-0845	2.0-4.5	11.0	11.0	10.9	14.0	1.5	18.5
M10 x 1.5	CH-RB-1050	2.0-5.0	13.0	13.0	12.9	16.0	1.5	21.0



CH-KB

BLINDNIETMUTTERN, SENKKOPF, RÄNDELSCHAFT, STAHL CHROM 6 FREI VERZINKT

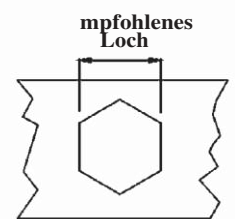
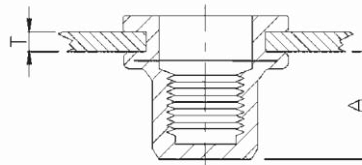
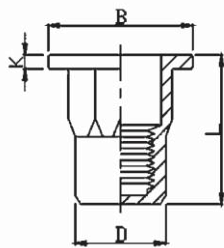
Gewinde	Bezeichnung	Blechdicke Min - Max T [mm]	A Ref	Empfohlenes Loch + 0.1 / -0 [mm]	D [mm]	B [mm]	K [mm]	L [mm]
M4 x 0.7	CH-KB-0430	1.5-3.0	6.5	6.0	5.9	9.0	1.5	12.0
M5 x 0.8	CH-KB-0535	1.5-3.5	7.5	7.0	6.9	10.0	1.5	13.0
M6 x 1.0	CH-KB-0640	1.5-4.0	9.0	9.0	8.9	12.0	1.5	15.5
M8 x 1.25	CH-KB-0845	2.0-4.5	11.0	11.0	10.9	14.0	1.5	18.5
M10 x 1.5	CH-KB-1050	2.0-5.0	13.0	13.0	12.9	16.0	1.5	21.0
M12 x 1.75	CH-KB-1250(16H)	2.0-5.0	16.5	16.0	15.	19.0	1.5	24.0



FH-SHB

BLINDNIETMUTTERN, FLACHKOPF, TEILWEISER 6-KANT SCHAFT, STAHL CHROM 6 FREI VERZINKT

Gewinde	Bezeichnung	Blechdicke Min - Max T [mm]	A Ref	Empfohlenes Loch + 0.1 /-0 [mm]	D [mm]	B [mm]	K [mm]	L [mm]
M4 x 0.7	FH-SHB-0420	0.5-2.0	6.5	6.0	5.9	9.0	0.8	11.0
M5 x 0.8	FH-SHB-0525	0.5-2.5	8.0	7.0	6.9	10.0	1.0	13.0
M6 x 1.0	FH-SHB-0630	0.5-3.0	8.5	9.0	8.9	12.7	1.35	15.0
M8 x 1.25	FH-SHB-0835	1.0-3.5	10.5	11.0	10.9	16.0	1.5	18.0
M10 x 1.5	FH-SHB-1035	1.0-3.5	12.5	13.0	12.9	18.0	1.7	21.0
M12 x 1.75	FH-SHB-1240	1.0-4.0	14.0	15.0	14.9	20.0	1.7	23.0
M10 x 1.5	FH-SHB-1035(12H)	1.0-3.5	11.0	12.0	11.9	17.0	1.6	19.0
M12 x 1.75	FH-SHB-1250(16H)	2.0-5.0	16.5	16.0	15.9	23.0	2.2	27.5

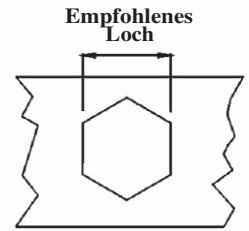
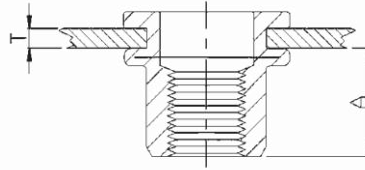
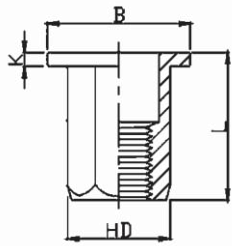


FH-SHBC

BLINDNIETMUTTERN GESCHLOSSEN, FLACHKOPF, TEILW. 6-KANT SCHAFT, STAHL CR. 6 FREI VERZINKT

Gewinde	Bezeichnung	Blechdicke Min - Max T [mm]	A Ref	Empfohlenes Loch + 0.1 /-0 [mm]	D [mm]	B [mm]	K [mm]	L [mm]
M4 x 0.7	FH-SHBC-0420	0.5-2.0	11.0	6.0	5.9	9.0	0.8	15.0
M5 x 0.8	FH-SHBC-0525	0.5-2.5	13.5	7.0	6.9	10.0	1.0	18.0
M6 x 1.0	FH-SHBC-0630	0.5-3.0	17.0	9.0	8.9	12.0	1.3	23.0
M8 x 1.25	FH-SHBC-0835	1.0-3.5	19.0	11.0	10.9	16.0	1.5	26.0
M10 x 1.5	FH-SHBC-1040	1.0-4.0	25.0	13.0	12.9	19.0	1.7	33.0

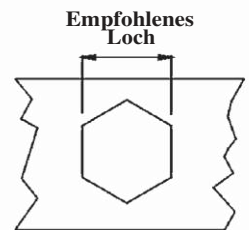
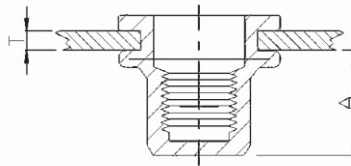
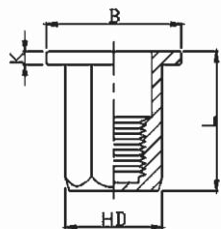
NUR AUF ANFRAGE



FH-FHB

BLINDNIETMUTTERN, FLACHKOPF, 6-KANT SCHAFT, STAHL CHROM 6 FREI VERZINKT

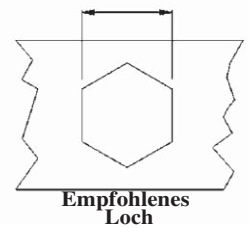
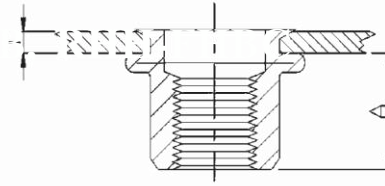
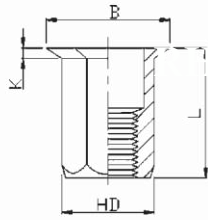
Gewinde	Bezeichnung	Blechdicke Min - Max T [mm]	A Ref	Empfohlenes Loch	D [mm]	B [mm]	K [mm]	L [mm]
				+ 0.1 / -0 [mm]				
M4 x 0.7	FH-FHB-0420	0.5-2.0	6.5	6.0	5.9	9.0	0.8	11.0
M5 x 0.8	FH-FHB-0525	0.5-2.5	8.0	7.0	6.9	10.0	1.0	14.0
M6 x 1.0	FH-FHB-0630	0.5-3.0	8.5	9.0	8.9	12.7	1.35	15.0
M8 x 1.25	FH-FHB-0835	1.0-3.5	10.5	11.0	10.9	16.0	1.5	18.0
M10 x 1.5	FH-FHB-1035	1.0-3.5	12.5	13.0	12.9	18.0	1.7	21.0
M12 x 1.75	FH-FHB-1240	1.0-4.0	14.0	15.0	14.9	20.0	1.7	23.0
M10 x 1.5	FH-FHB-1035 (12H)	1.0-3.5	13.5	12.0	11.9	18.0	1.7	21.0
M12 x 1.75	FH-FHB-1250 (16H)	2.0-5.0	16.5	16.0	15.9	23.0	2.0	27.0



FH-FHBC

BLINDNIETMUTTERN GESCHLOSSEN, FLACHKOPF, 6-KANT SCHAFT, STAHL CHROM 6 FREI VERZINKT

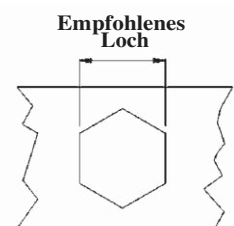
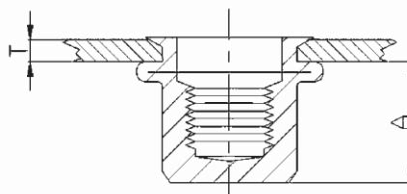
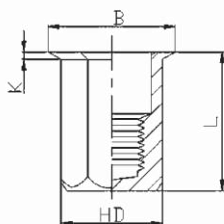
Gewinde	Bezeichnung	Blechdicke Min - Max T [mm]	A Ref	Empfohlenes Loch	D [mm]	B [mm]	K [mm]	L [mm]
				+ 0.1 / -0 [mm]				
M4 x 0.7	FH-FHBC-0420	0.5-2.0	11.0	6.0	5.9	9.0	1.0	15.0
M5 x 0.8	FH-FHBC-0525	0.5-2.5	13.5	7.0	6.9	10.0	1.0	18.0
M6 x 1.0	FH-FHBC-0630	0.5-3.0	17.0	9.0	8.9	12.7	1.5	23.0
M8 x 1.25	FH-FHBC-0835	1.0-3.5	19.0	11.0	10.9	16.0	1.5	26.0
M10 x 1.5	FH-FHBC-1040	1.0-4.0	25.0	13.0	12.9	19.0	2.0	33.0



RHH-FHB

BLINDNIETMUTTERN, MIKROKOPF, 6-KANT SCHAFT, STAHL CHROM 6 FREI VERZINKT

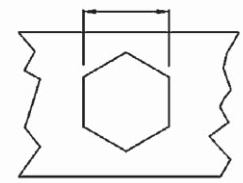
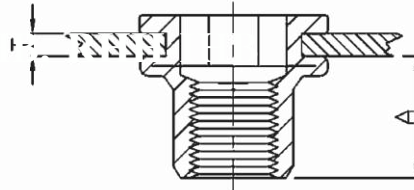
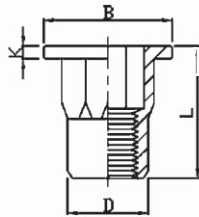
Gewinde	Bezeichnung	Blechdicke Min - Max T [mm]	A Ref	Empfohlenes Loch + 0.1 / -0 [mm]	D [mm]	B [mm]	K [mm]	L [mm]
M4 x 0.7	RHH-FHB-0425	0.5-2.5	6.7	6.0	5.9	7.0	0.5	11.0
M4 x 0.7	RHH-FHB-0450	2.5-5.0	6.7	6.0	5.9	7.0	0.5	13.5
M5 x 0.8	RHH-FHB-0530	0.5-3.0	9.0	7.0	6.9	8.0	0.5	14.5
M5 x 0.8	RHH-FHB-0550	3.0-5.0	9.0	7.0	6.9	8.0	0.5	16.0
M6 x 1.0	RHH-FHB-0635	1.0-3.5	10.0	9.0	8.9	10.0	0.6	16.0
M6 x 1.0	RHH-FHB-0660	3.5-6.0	10.0	9.0	8.9	10.0	0.6	18.0
M8 x 1.25	RHH-FHB-0840	1.0-4.0	11.5	11.0	10.9	12.0	0.65	18.0
M8 x 1.25	RHH-FHB-0860	4.0-6.0	11.5	11.0	10.9	12.0	0.65	20.0
M10 x 1.5	RHH-FHB-1035	1.0-3.5	12.5	13.0	12.9	14.5	0.75	19.0
M10 x 1.5	RHH-FHB-1060	3.5-6.0	14.5	13.0	12.9	14.5	0.75	23.5



RHH-FHBC

BLINDNIETMUTTERN GESCHLOSSEN, MIKROKOPF, 6-KANT SCHAFT, STAHL CHROM 6 FREI VERZINKT

Gewinde	Bezeichnung	Blechdicke Min - Max T [mm]	A Ref	Empfohlenes Loch + 0.1 / -0 [mm]	D [mm]	B [mm]	K [mm]	L [mm]
M4 x 0.7	RHH-FHBC-0425	0.5-2.5	12.3	6.0	5.9	7.0	0.5	16.0
M5 x 0.8	RHH-FHBC-0530	0.5-3.0	15.2	7.0	6.9	8.0	0.5	20.0
M6 x 1.0	RHH-FHBC-0635	1.0-3.5	14.5	9.0	8.9	10.0	0.6	20.5
M8 x 1.25	RHH-FHBC-0840	1.0-4.0	17.0	11.0	10.9	12.0	0.65	23.0
M10 x 1.5	RHH-FHBC-1045	1.0-4.5	20.0	13.0	12.9	14.5	0.75	28.5

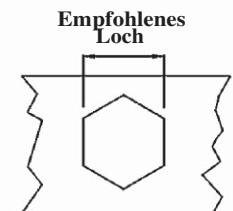
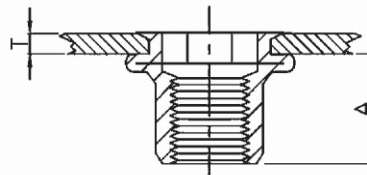
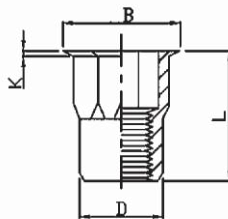


Empfohlenes Loch

FH-IHB

BLINDNIETMUTTERN, FLACHKOPF, TEILW. 6-KANT SCHAFT, INNEN 6-KANT, STAHL CR.M 6 FREI VERZINKT

Gewinde	Bezeichnung	Blechdicke Min - Max T [mm]	A Ref	Empfohlenes Loch	D [mm]	B [mm]	K [mm]	L [mm]
				+ 0.1/-0 [mm]				
M4 x 0.7	FH-IHB-0420	0.5-2.0	7.0	6.0	5.9	9.0	0.8	11.0
M5 x 0.8	FH-IHB-0525	0.5-2.5	7.5	7.0	6.9	10.0	1.0	12.0
M6 x 1.0	FH-IHB-0630	0.5-3.0	9.2	9.0	8.9	12.7	1.3	15.5
M8 x 1.25	FH-IHB-0835	1.0-3.5	11.2	11.0	10.9	16.0	1.5	18.0
M10 x 1.5	FH-IHB-1040	1.0-4.0	12.8	13.0	12.9	18.0	1.7	21.0

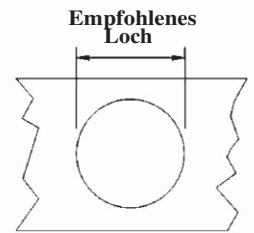
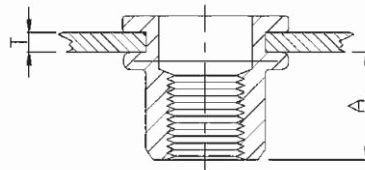
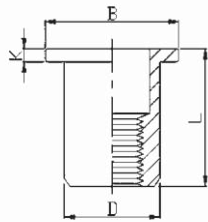


Empfohlenes Loch

RHH-IHB

BLINDNIETMUTTERN, MIKROKOPF, TEILWEISER 6-KANT SCHAFT, STAHL CHROM 6 FREI VERZINKT

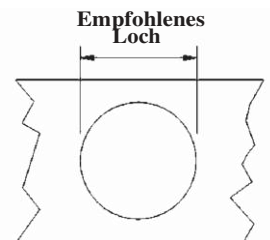
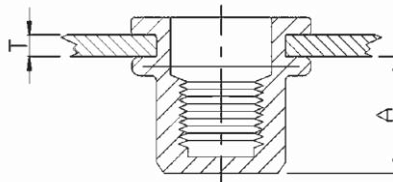
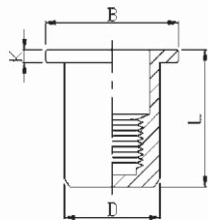
Gewinde	Bezeichnung	Blechdicke Min - Max T [mm]	A Ref	Empfohlenes Loch	D [mm]	B [mm]	K [mm]	L [mm]
				+ 0.1/-0 [mm]				
M4 x 0.7	RHH-IHB-0420	0.5-2.0	8.3	6.0	5.9	7.0	0.5	12.0
M5 x 0.8	RHH-IHB-0525	0.5-2.5	8.7	7.0	6.9	8.0	0.5	13.0
M6 x 1.0	RHH-IHB-0635	1.0-3.5	10.5	9.0	8.9	10.0	0.6	16.0
M8 x 1.25	RHH-IHB-0840	1.0-4.0	11.3	11.0	10.9	12.7	0.6	17.5
M10 x 1.5	RHH-IHB-1045	1.0-4.5	12.8	13.0	12.9	14.5	0.7	21.0



FH-RB/SS

BLINDNIETMUTTERN, FLACHKOPF, EDELSTAHL

Gewinde	Bezeichnung	Blechdicke Min - Max T [mm]	A Ref	Empfohlenes Loch + 0.1 / -0 [mm]	D [mm]	B [mm]	K [mm]	L [mm]
M4 x 0.7	FH-RB/SS-0420	0.5-2.0	6.0	6.0	5.9	8.5	0.8	10.5
M5 x 0.8	FH-RB/SS-0525	0.5-2.5	7.5	7.0	6.9	10.0	1.0	13.0
M6 x 1.0	FH-RB/SS-0630	0.5-3.0	9.2	9.0	8.9	12.3	1.3	15.5
M8 x 1.25	FH-RB/SS-0835	1.0-3.5	11.5	11.0	10.9	15.0	1.5	18.5
M10 x 1.5	FH-RB/SS-1040	1.0-4.0	12.5	13.0	12.9	17.0	1.6	21.0

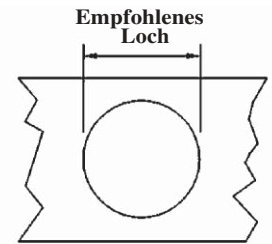
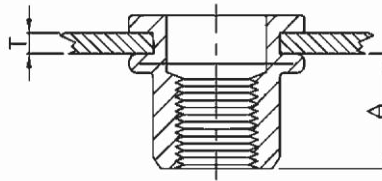
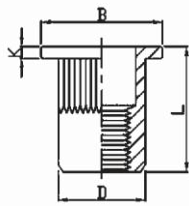


FH-RBC/SS

BLINDNIETMUTTERN GESCHLOSSEN, FLACHKOPF, EDELSTAHL

Gewinde	Bezeichnung	Blechdicke Min - Max T [mm]	A Ref	Empfohlenes Loch + 0.1 / 0 [mm]	D [mm]	B [mm]	K [mm]	L [mm]
M4 x 0.7	FH-RBC/SS-0420	0.5-2.0	11.3	6.0	5.9	9.0	0.8	16.0
M5 x 0.8	FH-RBC/SS-0525	0.5-2.5	13.8	7.0	6.9	10.0	1.0	19.0
M6 x 1.0	FH-RBC/SS-0630	0.5-3.0	15.0	9.0	8.9	12.3	1.3	21.0
M8 x 1.25	FH-RBC/SS-0835	1.0-3.5	18.2	11.0	10.9	15.5	1.5	25.0
M10 x 1.5	FH-RBC/SS-1040	1.0-4.0	19.4	13.0	12.9	17.0	1.6	27.0

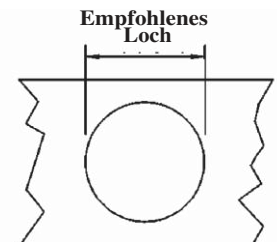
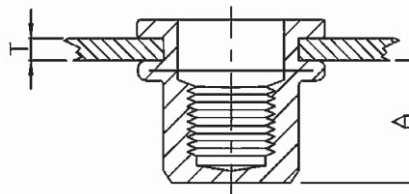
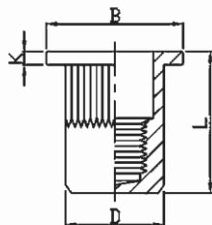
NUR AUF ANFRAGE



FH-KB/SS

BLINDNIETMUTTERN, FLACHKOPF, RÄNDELSCHAFT, EDELSTAHL

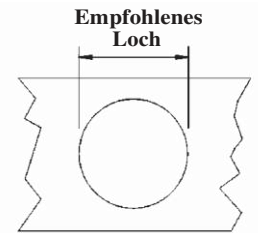
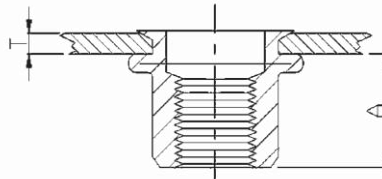
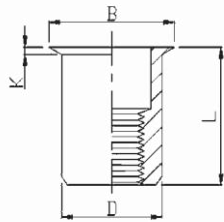
Gewinde	Bezeichnung	Blechdicke Min - Max T [mm]	A Ref	Empfohlenes Loch		D [mm]	B [mm]	K [mm]	L [mm]
				+ 0.1 /-0 [mm]					
M4 x 0.7	FH-KB/SS-0420	0.5-2.0	6.5	6.0		5.9	9.0	0.8	10.5
M5 x 0.8	FH-KB/SS-0525	0.5-2.5	8.0	7.0		6.9	10.0	1.0	13.0
M6 x 1.0	FH-KB/SS-0630	0.5-3.0	9.2	9.0		8.9	12.3	1.3	15.5
M8 x 1.25	FH-KB/SS-0835	1.0-3.5	11.5	11.0		10.9	14.5	1.5	18.5
M10 x 1.5	FH-KB/SS-1040	1.0-4.0	13.5	13.0		12.9	17.0	1.6	21.0



FH-KBC/SS

BLINDNIETMUTTERN GESCHLOSSEN, FLACHKOPF, RÄNDELSCHAFT, EDELSTAHL

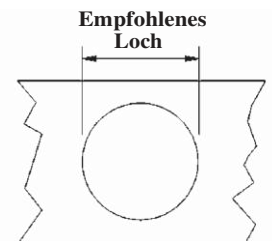
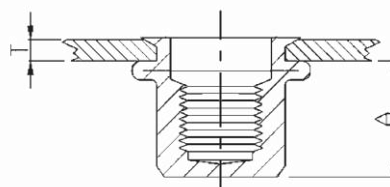
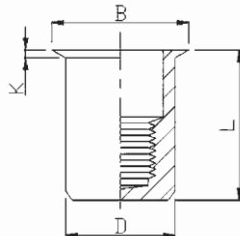
Gewinde	Bezeichnung	Blechdicke Min - Max T [mm]	A Ref	Empfohlenes Loch		D [mm]	B [mm]	K [mm]	L [mm]
				+ 0.1 /-0 [mm]					
M4 x 0.7	FH-KBC/SS-0420	0.5-2.0	11.8	6.0		5.9	9.0	0.8	16.0
M5 x 0.8	FH-KBC/SS-0525	0.5-2.5	12.0	7.0		6.9	10.0	1.0	17.0
M6 x 1.0	FH-KBC/SS-0630	0.5-3.0	12.7	9.0		8.9	12.3	1.3	19.2
M8 x 1.25	FH-KBC/SS-0835	1.0-3.5	14.2	11.0		10.9	15.0	1.5	21.5
M10 x 1.5	FH-KBC/SS-1040	1.0-4.0	18.0	13.0		12.9	17.0	1.6	27.0



RH-RB/SS

BLINDNIETMUTTERN, MIKROKOPF, EDELSTAHL

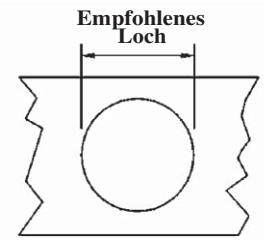
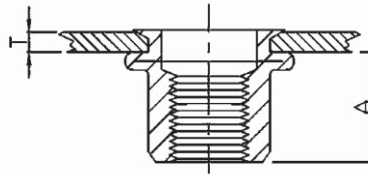
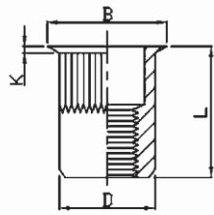
Gewinde	Bezeichnung	Blechdicke Min - Max T [mm]	A Ref	Empfohlenes Loch + 0.1 /-0 [mm]	D [mm]	B [mm]	K [mm]	L [mm]
M4 x 0.7	RH-RB/SS-0420	0.5-2.0	6.5	6.0	5.9	7.0	0.5	10.5
M5 x 0.8	RH-RB/SS-0520	0.5-2.0	7.0	7.0	6.9	8.0	0.5	11.5
M6 x 1.0	RH-RB/SS-0625	0.5-2.5	8.5	9.0	8.9	10.0	0.6	14.0
M8 x 1.25	RH-RB/SS-0830	1.0-3.0	10.5	11.0	10.9	12.0	0.6	16.5
M10 x 1.5	RH-RB/SS-1030	1.0-3.5	11.5	13.0	12.9	14.0	0.7	17.7



RH-RBC/SS

BLINDNIETMUTTERN GESCHLOSSEN, MIKROKOPF, EDELSTAHL

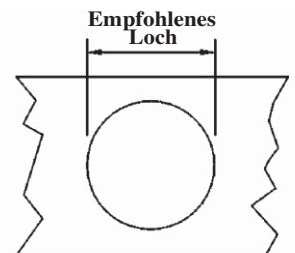
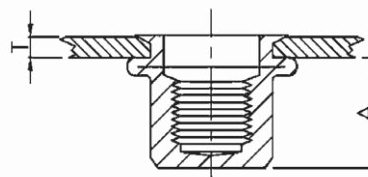
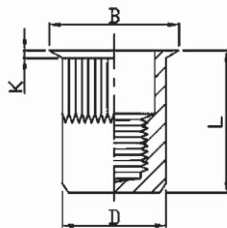
Gewinde	Bezeichnung	Blechdicke Min - Max T [mm]	A Ref	Empfohlenes Loch + 0.1 /-0 [mm]	D [mm]	B [mm]	K [mm]	L [mm]
M4 x 0.7	RH-RBC/SS-0420	0.5-2.0	11.0	6.0	5.9	7.0	0.5	10.5
M5 x 0.8	RH-RBC/SS-0520	0.5-2.0	12.5	7.0	6.9	8.0	0.5	16.5
M6 x 1.0	RH-RBC/SS-0625	0.5-2.5	15.5	9.0	8.9	10.0	0.6	20.5
M8 x 1.25	RH-RBC/SS-0830	1.0-3.0	17.6	11.0	10.9	12.0	0.6	23.0
M10 x 1.5	RH-RBC/SS-1035	1.0-3.5	18.3	13.0	12.9	14.0	0.7	24.5



RH-KB/SS

BLINDNIETMUTTERN, MIKROKOPF, RÄNDELSCHAFT, EDELSTAHL

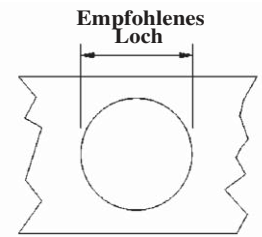
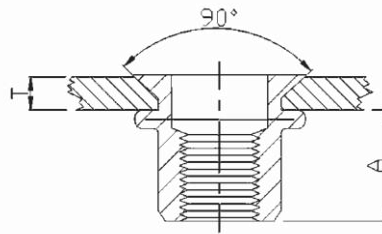
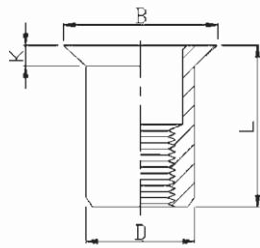
Gewinde	Bezeichnung	Blechdicke Min - Max T [mm]	A Ref	Empfohlenes Loch		D [mm]	B [mm]	K [mm]	L [mm]
				+ 0.1	-0				
M4 x 0.7	RH-KB/SS-0420	0.5-2.0	6.5	6.0		5.9	7.0	0.5	10.5
M5 x 0.8	RH-KB/SS-0520	0.5-2.0	7.2	7.0		6.9	8.0	0.5	11.5
M6 x 1.0	RH-KB/SS-0625	0.5-2.5	8.7	9.0		8.9	10.0	0.6	14.0
M8 x 1.25	RH-KB/SS-0830	0.5-3.0	10.5	11.0		10.9	12.0	0.65	16.5
M10 x 1.5	RH-KB/SS-1035	1.0-3.5	10.7	13.0		12.9	14.0	0.7	17.7



RH-KBC/SS

BLINDNIETMUTTERN GESCHLOSSEN, MIKROKOPF, RÄNDELSCHAFT, EDELSTAHL

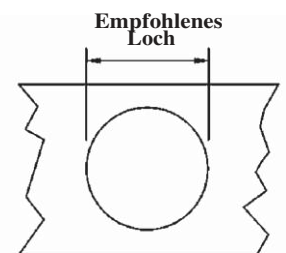
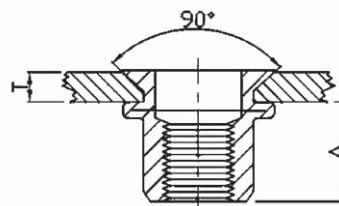
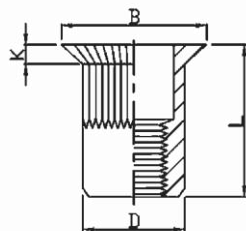
Gewinde	Bezeichnung	Blechdicke Min - Max T [mm]	A Ref	Empfohlenes Loch		D [mm]	B [mm]	K [mm]	L [mm]
				+ 0.1	-0				
M4 x 0.7	RH-KBC/SS-0420	0.5-2.0	11.2	6.0		5.9	7.0	0.5	15.0
M5 x 0.8	RH-KBC/SS-0520	0.5-2.0	11.5	7.0		6.9	8.0	0.5	16.5
M6 x 1.0	RH-KBC/SS-0625	0.5-2.5	15.0	9.0		8.9	10.0	0.6	20.5
M8 x 1.25	RH-KBC/SS-0830	0.5-3.0	17.5	11.0		10.9	12.0	0.65	23.0
M10 x 1.5	RH-KBC/SS-1035	1.0-3.5	18.0	13.0		12.9	14.0	0.7	24.5



CH-RB/SS

BLINDNIETMUTTERN, SENKKOPF, EDELSTAHL

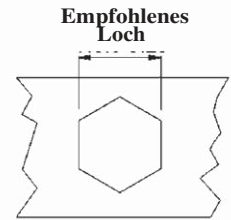
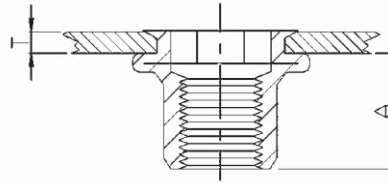
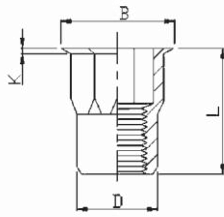
Gewinde	Bezeichnung	Blechdicke Min - Max T [mm]	A Ref	Empfohlenes Loch + 0.1 /-0 [mm]	D [mm]	B [mm]	K [mm]	L [mm]
M4 x 0.7	CH-RB/SS-0430	1.5-3.0	7.5	6.0	5.9	9.0	1.5	12.0
M5 x 0.8	CH-RB/SS-0535	1.5-3.5	7.8	7.0	6.9	10.0	1.5	13.0
M6 x 1.0	CH-RB/SS-0640	1.5-4.0	9.0	9.0	8.9	12.0	1.5	15.5
M8 x 1.25	CH-RB/SS-0845	2.0-4.5	12.0	11.0	10.9	14.0	1.5	18.5
M10 x 1.5	CH-RB/SS-1050	2.0-5.0	13.0	13.0	12.9	16.0	1.5	21.0



CH-KB/SS

BLINDNIETMUTTERN, SENKKOPF, RÄNDELSCHAFT, EDELSTAHL

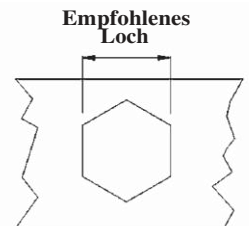
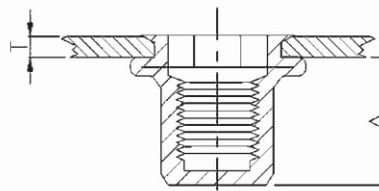
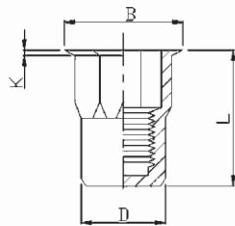
Gewinde	Bezeichnung	Blechdicke Min - Max T [mm]	A Ref	Empfohlenes Loch + 0.1 /-0 [mm]	D [mm]	B [mm]	K [mm]	L [mm]
M4 x 0.7	CH-KB/SS-0430	1.5-3.0	7.5	6.0	5.9	9.0	1.5	12.0
M5 x 0.8	CH-KB/SS-0535	1.5-3.5	7.8	7.0	6.9	10.0	1.5	13.0
M6 x 1.0	CH-KB/SS-0640	1.5-4.0	9.0	9.0	8.9	12.0	1.5	15.5
M8 x 1.25	CH-KB/SS-0845	2.0-4.5	12.0	11.0	10.9	14.0	1.5	18.5
M10 x 1.5	CH-KB/SS-1050	2.0-5.0	13.0	13.0	12.9	16.0	1.5	21.0



RHH-IHB/SS

BLINDNIETMUTTERN, MIKROKOPF, TEILWEISER 6-KANT SCHAFT, INNEN 6-KANT, EDELSTAHL

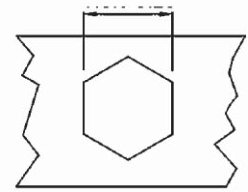
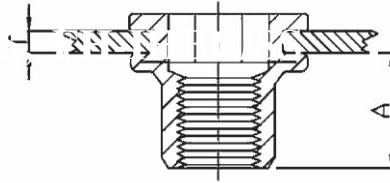
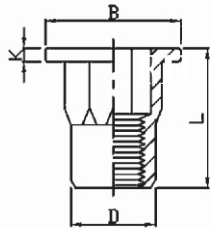
Gewinde	Bezeichnung	Blechdicke Min - Max T [mm]	A Ref	Empfohlenes Loch + 0.1 /-0 [mm]	D [mm]	B [mm]	K [mm]	L [mm]
M4 x 0.7	RHH-IHB/SS-0420	0.5-2.0	8.0	6.0	5.9	7.0	0.5	12.0
M5 x 0.8	RHH-IHB/SS-0525	0.5-2.5	8.2	7.0	6.9	8.0	0.5	13.0
M6 x 1.0	RHH-IHB/SS-0630	0.5-3.0	10.7	9.0	8.9	10.0	0.6	16.0
M8 x 1.25	RHH-IHB/SS-0835	1.0-3.5	11.2	11.0	10.9	12.0	0.65	17.5
M10 x 1.5	RHH-IHB/SS-1040	1.0-4.0	13.5	13.0	12.9	14.5	0.75	21.0



RHH-IHBC/SS

BLINDNIETMUTTERN GESCHLOSSEN, MIKROKOPF, TEILWEISER 6-KANT SCHAFT, INNEN 6-KANT, EDELSTAHL

Gewinde	Bezeichnung	Blechdicke Min - Max T [mm]	A Ref	Empfohlenes Loch + 0.1 /-0 [mm]	D [mm]	B [mm]	K [mm]	L [mm]
M4 x 0.7	RHH-IHBC/SS-0420	0.5-2.0	11.5	6.0	5.9	7.0	0.5	15.5
M5 x 0.8	RHH-IHBC/SS-0525	0.5-2.5	13.5	7.0	6.9	8.0	0.5	18.0
M6 x 1.0	RHH-IHBC/SS-0630	0.5-3.0	15.8	9.0	8.9	10.0	0.6	21.5
M8 x 1.25	RHH-IHBC/SS-0835	1.0-3.5	18.2	11.0	10.9	12.0	0.65	24.0
M10 x 1.5	RHH-IHBC/SS-1040	1.0-4.0	23.2	13.0	12.9	14.5	0.75	30.5

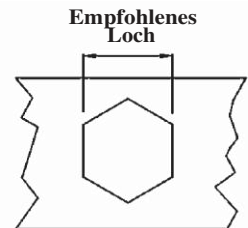
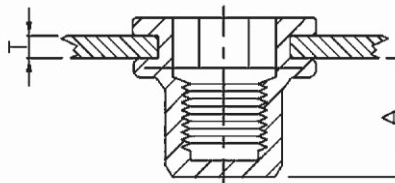
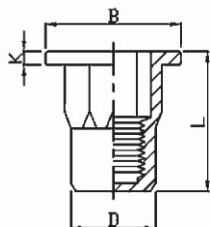


Empfohlenes Loch

FH-IHB/SS

BLINDNIETMUTTERN, FLACHKOPF, TEILWEISER 6-KANT SCHAFT, INNEN 6-KANT, EDELSTAHL

Gewinde	Bezeichnung	Blechdicke Min - Max T [mm]	A Ref	Empfohlenes Loch + 0.1 /-0 [mm]	D [mm]	B [mm]	K [mm]	L [mm]
M4 x 0.7	FH-IHB/SS-0420	0.5-2.0	7.2	6.0	5.9	9.0	0.8	11.0
M5 x 0.8	FH-IHB/SS-0525	0.5-2.5	7.5	7.0	6.9	10.0	1.0	12.0
M6 x 1.0	FH-IHB/SS-0630	0.5-3.0	9.2	9.0	8.9	12.7	1.3	15.5
M8 x 1.25	FH-IHB/SS-0835	1.0-3.5	11.0	11.0	10.9	16.0	1.5	18.0
M10 x 1.5	FH-IHB/SS-1040	1.0-4.0	13.2	13.0	12.9	18.0	1.7	21.0

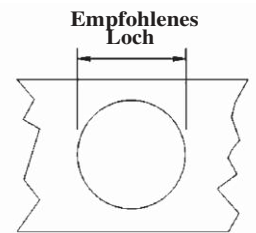
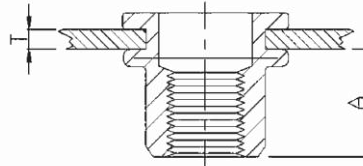
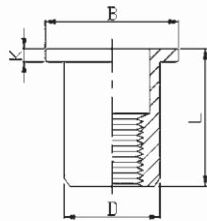


Empfohlenes Loch

FH-IHBC/SS

BLINDNIETMUTTERN GESCHLOSSEN, FLACHKOPF, TEILWEISER 6-KANT SCHAFT, INNEN 6-KANT, EDELSTAHL

Gewinde	Bezeichnung	Blechdicke Min - Max T [mm]	A Ref	Empfohlenes Loch + 0.1 /-0 [mm]	D [mm]	B [mm]	K [mm]	L [mm]
M4 x 0.7	FH-IHBC/SS-0420	0.5-2.0	11.5	6.0	5.9	9.0	1.0	16.0
M5 x 0.8	FH-IHBC/SS-0525	0.5-2.5	13.5	7.0	6.9	10.0	1.0	18.5
M6 x 1.0	FH-IHBC/SS-0630	0.5-3.0	17.0	9.0	8.9	12.7	1.5	23.0
M8 x 1.25	FH-IHBC/SS-0835	1.0-3.5	18.2	11.0	10.9	16.0	1.5	25.0
M10 x 1.5	FH-IHBC/SS-1040	1.0-4.0	25.0	13.0	12.9	19.0	1.7	33.0

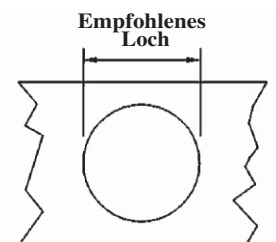
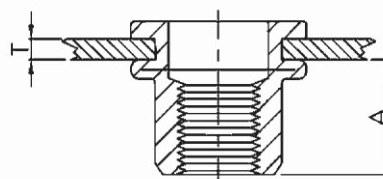
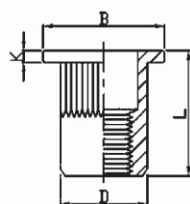


FH-RB/AL

BLINDNIETMUTTERN, FLACHKOPF, ALUMINIUM

NEW

Gewinde	Bezeichnung	Blechdicke Min - Max T [mm]	A Ref	Empfohlenes Loch + 0.1 /-0 [mm]	D [mm]	B [mm]	K [mm]	L [mm]
M4 x 0.7	FH-RB/AL-0420	0.5-2.0	6.0	6.0	5.9	8.8	0.8	10.5
M5 x 0.8	FH-RB/AL-0525	0.5-2.5	7.5	7.0	6.9	10.0	1.0	13.0
M6 x 1.0	FH-RB/AL-0625	0.5-2.5	9.2	9.0	8.9	12.3	1.5	15.0
M8 x 1.25	FH-RB/AL-0830	1.0-3.0	11.2	11.0	10.9	14.3	1.5	16.5
M10 x 1.5	FH-RB/AL-1040	1.0-4.0	11.5	13.0	12.9	16.3	1.6	19.0

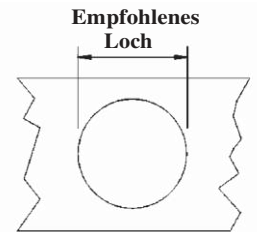
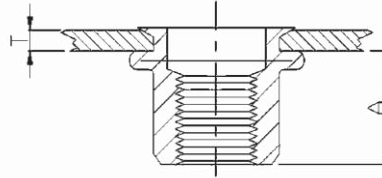
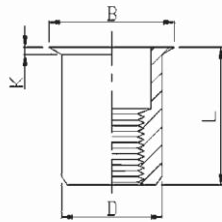


FH-KB/AL

BLINDNIETMUTTERN, FLACHKOPF, RÄNDELSCHAFT, ALUMINIUM

NEW

Gewinde	Bezeichnung	Blechdicke Min - Max T [mm]	A Ref	Empfohlenes Loch + 0.1 /-0 [mm]	D [mm]	B [mm]	K [mm]	L [mm]
M4 x 0.7	FH-KB/AL-0420	0.5-2.0	6.0	6.0	5.9	8.8	0.8	10.5
M5 x 0.8	FH-KB/AL-0525	0.5-2.5	7.5	7.0	6.9	10.0	1.0	13.0
M6 x 1.0	FH-KB/AL-0625	0.5-2.5	9.2	9.0	8.9	12.3	1.5	15.0
M8 x 1.25	FH-KB/AL-0830	1.0-3.0	10.2	11.0	10.9	14.3	1.5	16.5
M10 x 1.5	FH-KB/AL-1040	1.0-4.0	11.5	13.0	12.9	16.3	1.6	19.0

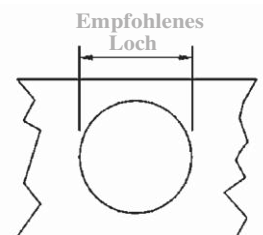
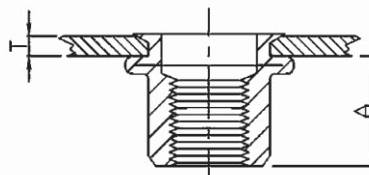
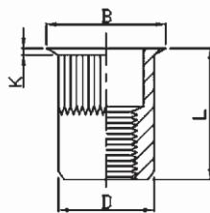


RH-RB/AL

BLINDNIETMUTTERN, MIKROKOPF, ALUMINIUM

NEW

Gewinde	Bezeichnung	Blechdicke Min - Max T [mm]	A Ref	Empfohlenes Loch + 0.1 /-0 [mm]	D [mm]	B [mm]	K [mm]	L [mm]
M4 x 0.7	RH-RB/AL-0420	0.5-2.0	6.0	6.0	5.9	7.0	0.5	10.5
M5 x 0.8	RH-RB/AL-0520	0.5-2.0	7.5	7.0	6.9	8.0	0.5	11.5
M6 x 1.0	RH-RB/AL-0625	0.5-2.5	9.2	9.0	8.9	10.0	0.6	14.0
M8 x 1.25	RH-RB/AL-0825	0.5-2.5	10.2	11.0	10.9	12.0	0.65	15.5
M10 x 1.5	RH-RB/AL-1030	1.0-3.0	11.5	13.0	12.9	14.1	0.7	17.7



NEW

RH-KB/AL

BLINDNIETMUTTERN, MIKROKOPF, RÄNDELSCHAFT, ALUMINIUM

Gewinde	Bezeichnung	Blechdicke Min - Max T [mm]	A Ref	Empfohlenes Loch + 0.1 /-0 [mm]	D [mm]	B [mm]	K [mm]	L [mm]
M4 x 0.7	RH-KB/AL-0420	0.5-2.0	6.0	6.0	5.9	7.0	0.5	10.5
M5 x 0.8	RH-KB/AL-0520	0.5-2.0	7.5	7.0	6.9	8.0	0.5	11.5
M6 x 1.0	RH-KB/AL-0625	0.5-2.5	9.2	9.0	8.9	10.0	0.6	14.0
M8 x 1.25	RH-KB/AL-0830	0.5-2.5	10.2	11.0	10.9	12.0	0.65	15.5
M10 x 1.5	RH-KB/AL-1030	1.0-3.0	11.5	13.0	12.9	14.1	0.7	17.7