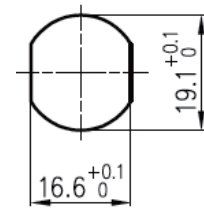
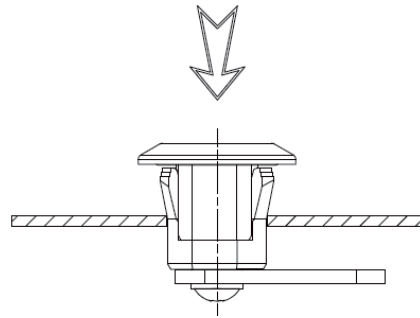


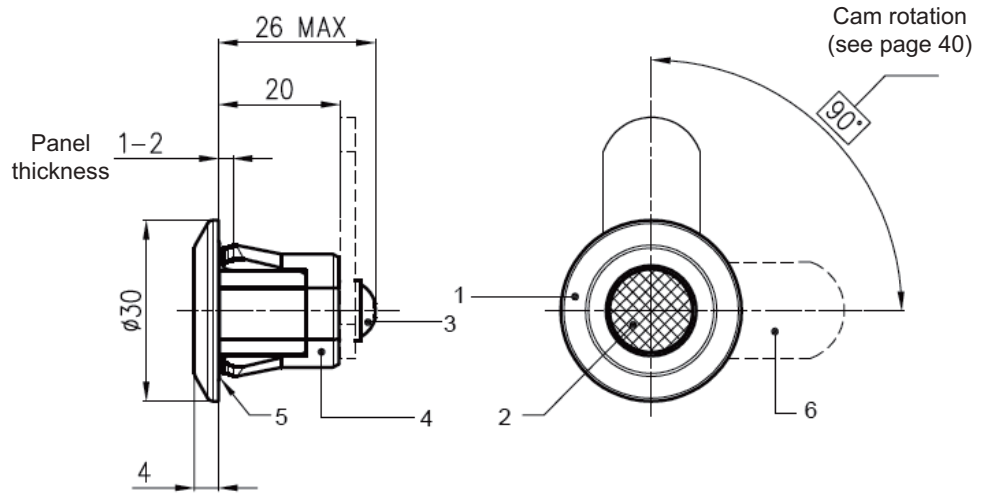
9*920 - Drehriegel, Kunststoff, einklippsbar



Patent pending!



Fixing hole size



Triangle 6,5 mm

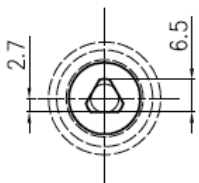
Triangle 8 mm

Square 7 mm

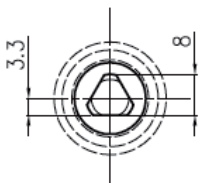
Slotted recess

Triangle 8 mm
ORZ SUR ζ OH

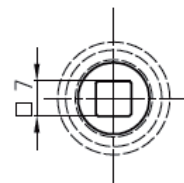
P3 pin



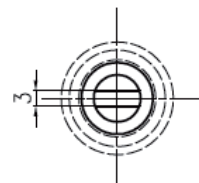
Code: A



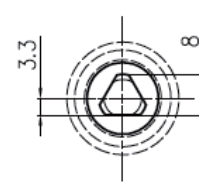
Code: B



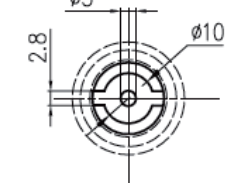
Code: C



Code: D



Code: J



Code: P

Insert * head style "code" and $\phi\phi$ material "code" into lock part number

Lock Part Number
9*920 $\phi\phi$ NBW

Ref	Part description	PLASTIC/ZINC ALLOY (NB) Material - Finishing	PLASTIC (PN) Material - Finishing
1	Housing	PA6.6 + 30%GF Black	PA6.6 + 30%GF Black
2	Cylinder	Zinc alloy - Bright chrome	PA6.6 + 30%GF Black
3	Screw M5X10	Steel - White zinc Cr6 free	Steel - White zinc Cr6 free
4	Clip	PA6.6 + 30%GF Black	PA6.6 + 30%GF Black
5	Gasket	NBR	NBR
6	Cam	Steel - White zinc Cr6 free	Steel - White zinc Cr6 free